

An aerial photograph of a mountain range in New Zealand. The foreground shows a steep, green hillside with some rocky outcrops. In the middle ground, a valley is visible with a winding river and some cleared areas. The background features a series of rugged, brownish mountains under a clear sky.

# New Zealand's Worst Weed Problem

Duane Peltzer  
Rowan Sprague



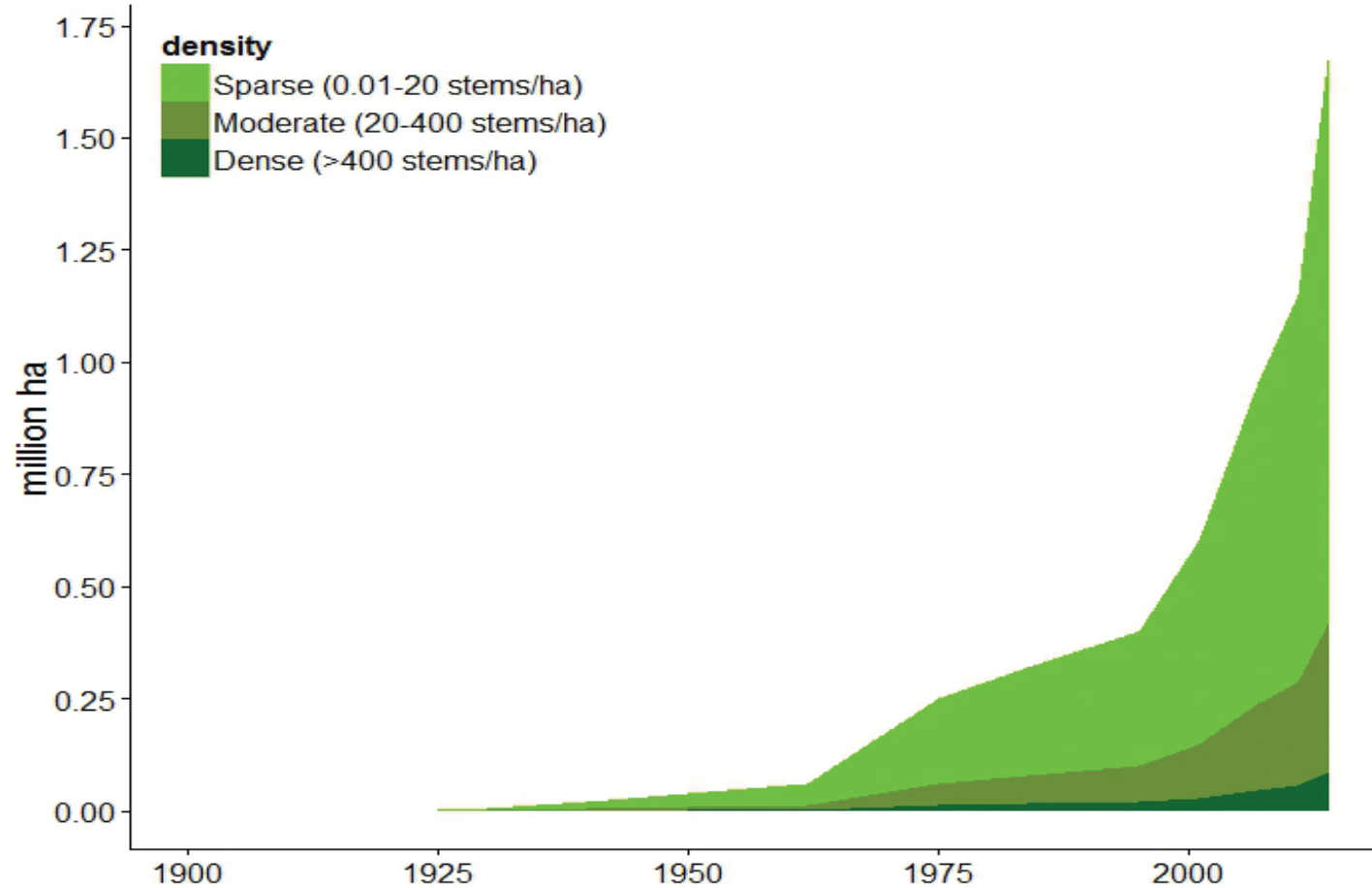
Jollies Pass, Hanmer Springs



Community groups and regional councils have been controlling wilding conifers for decades



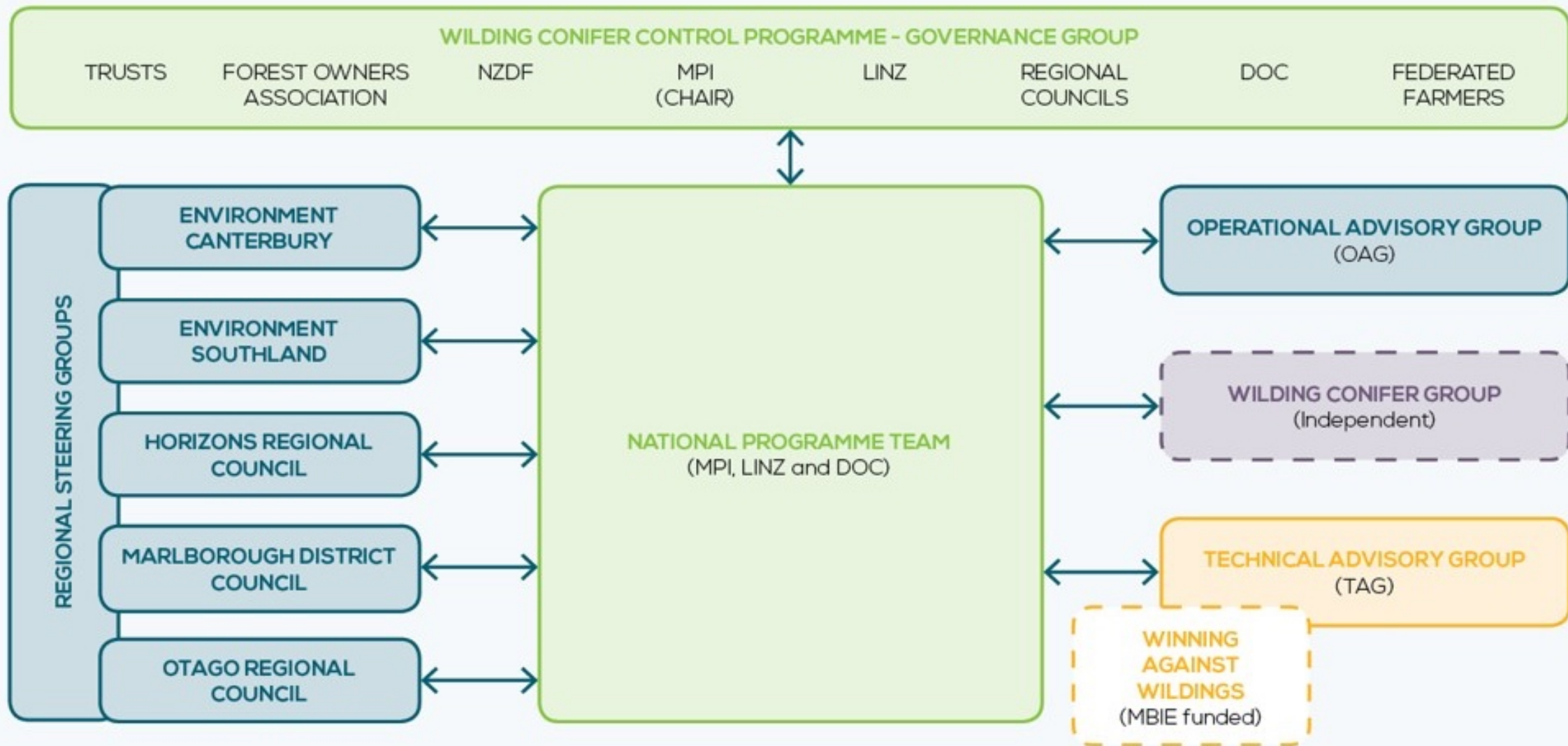
*Status quo* management has not successfully controlled the increase in wilding conifers nationally



Without management the area invaded could be 7 million ha, or 25% of NZ's total land area

# WILDING CONIFER CONTROL PROGRAMME - STRUCTURE

NEW ZEALAND WILDING CONIFER MANAGEMENT STRATEGY 2015-30

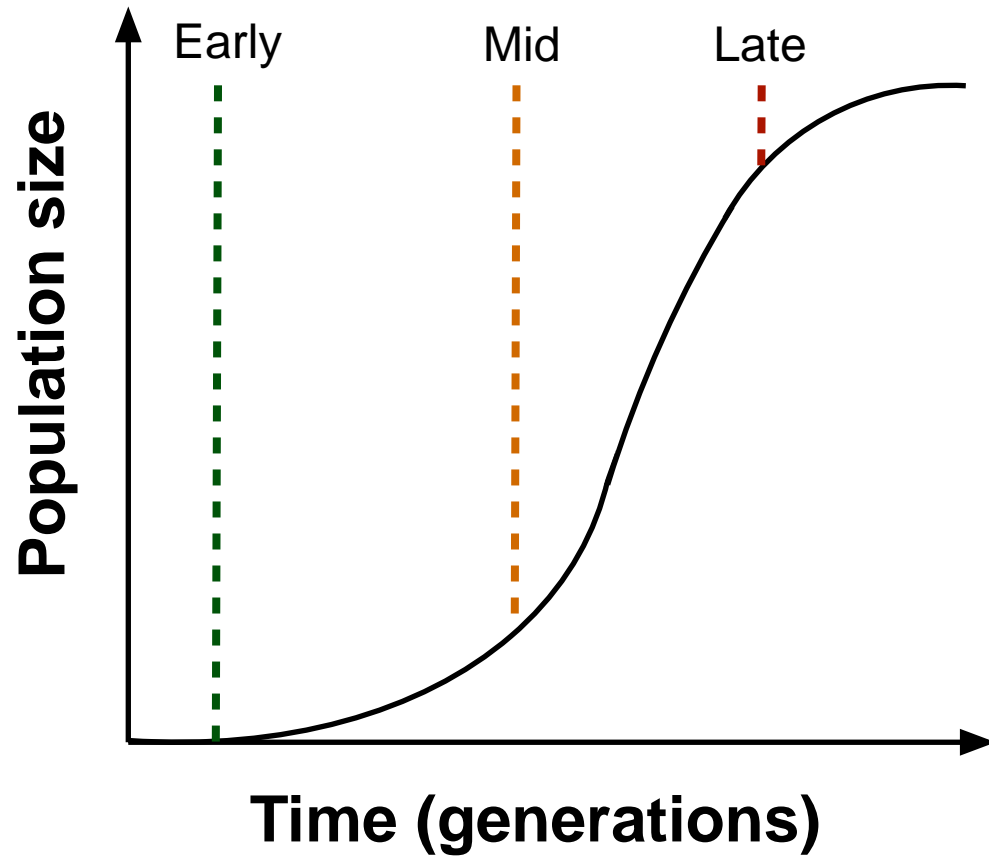


# Wilding conifers are a major invader both in NZ and internationally

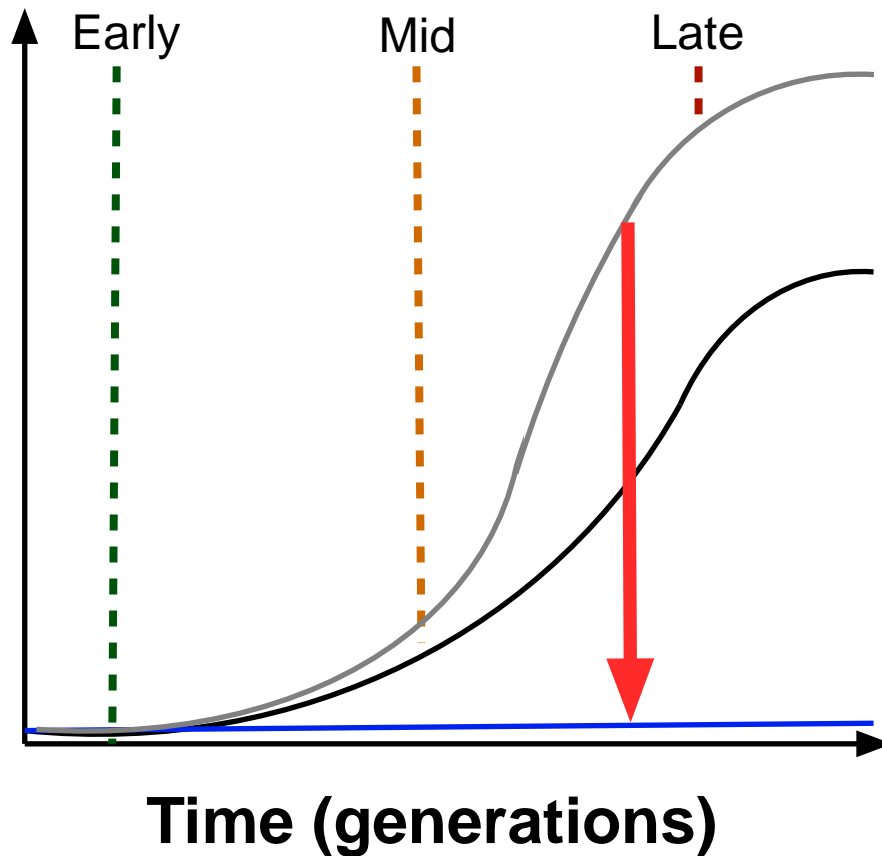


The 'Winning against wildings' programme and aligned work seeks to 'flatten the curve' for wildings in NZ

**Stage of invasion**



**Stage of invasion**

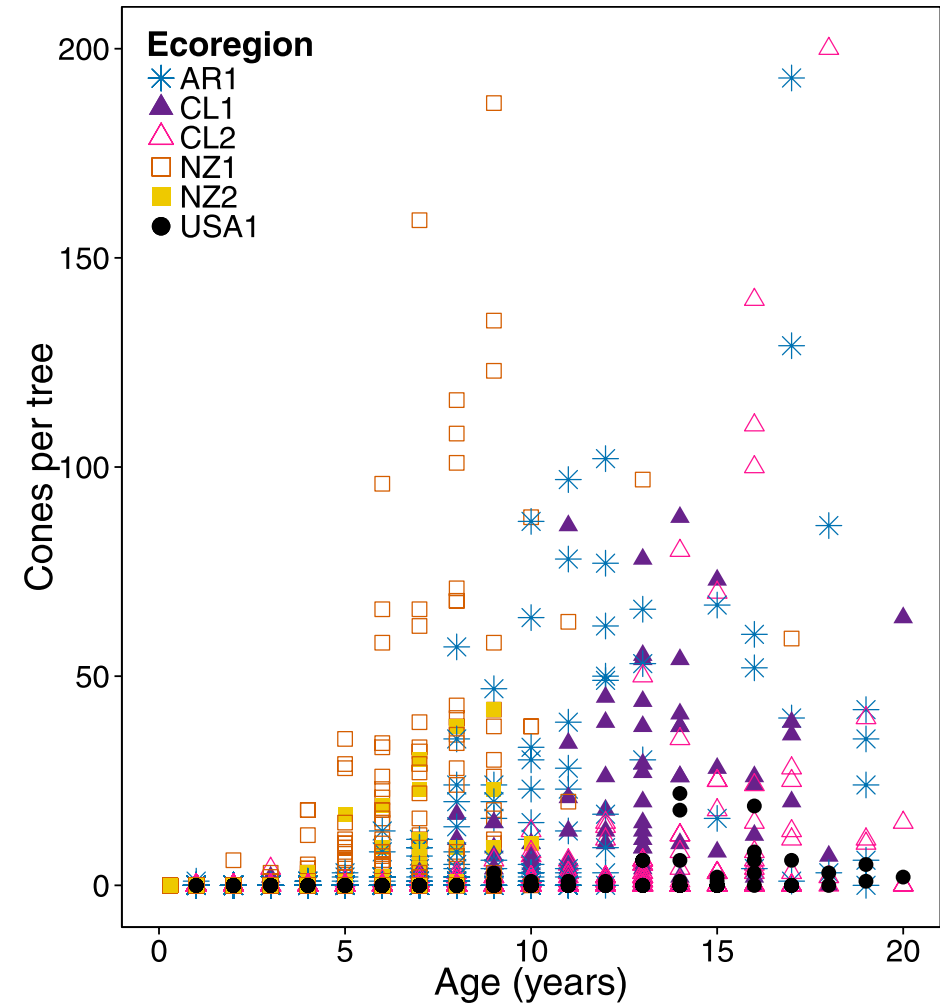
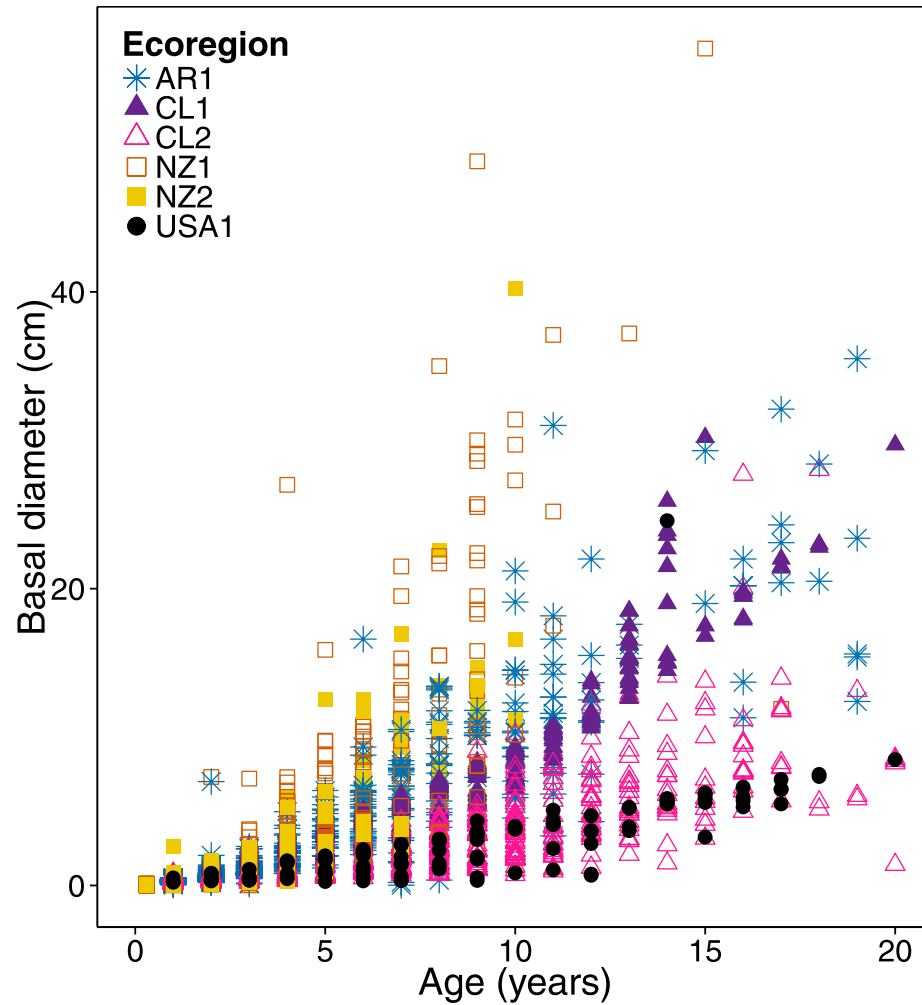


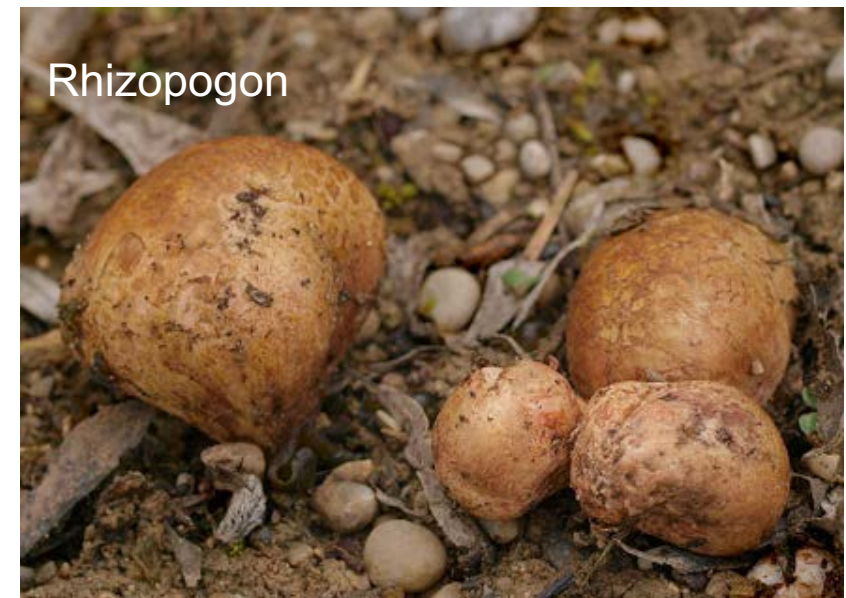
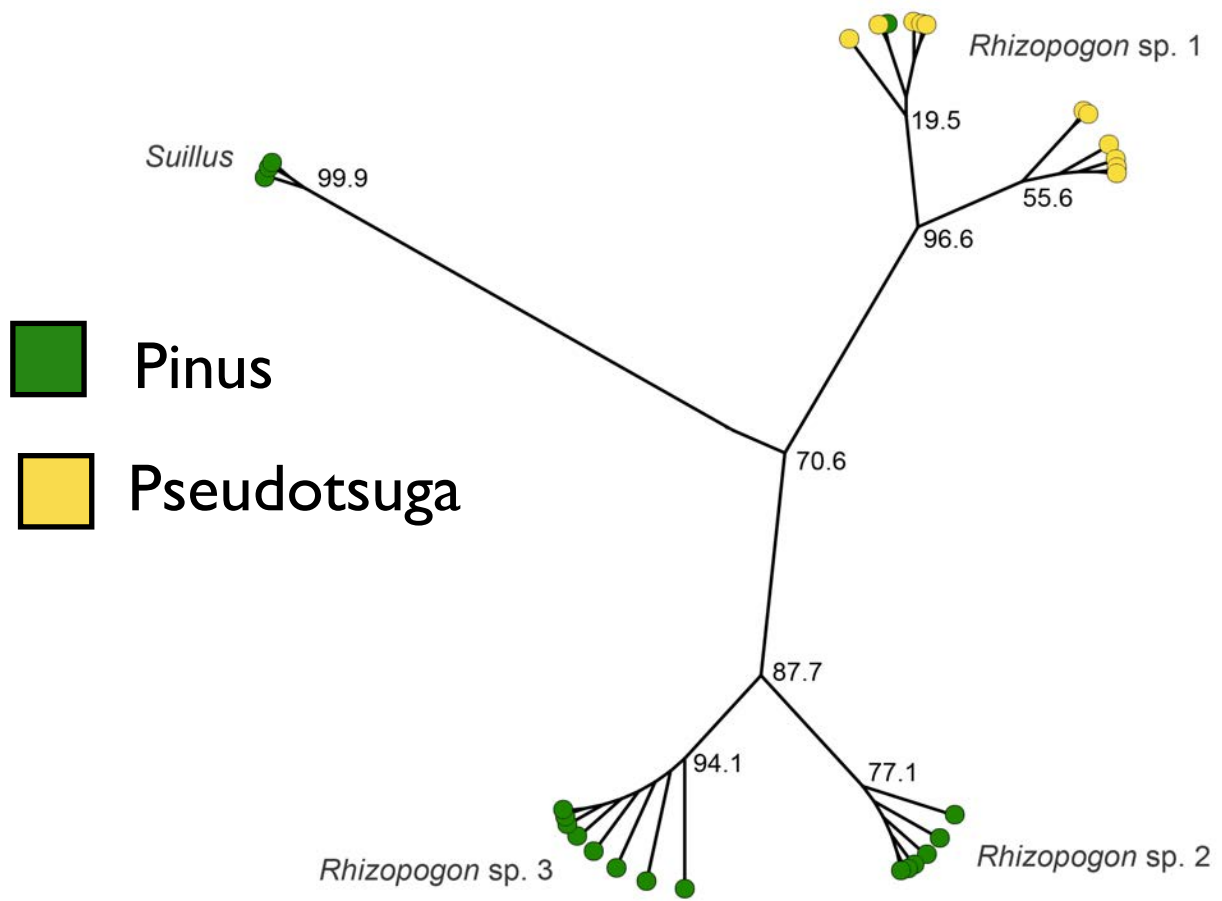






Lodgepole pine in NZ grows faster, produces more seeds for a given age, and has greater impacts on plant diversity compared to other regions





a

Continuous Control



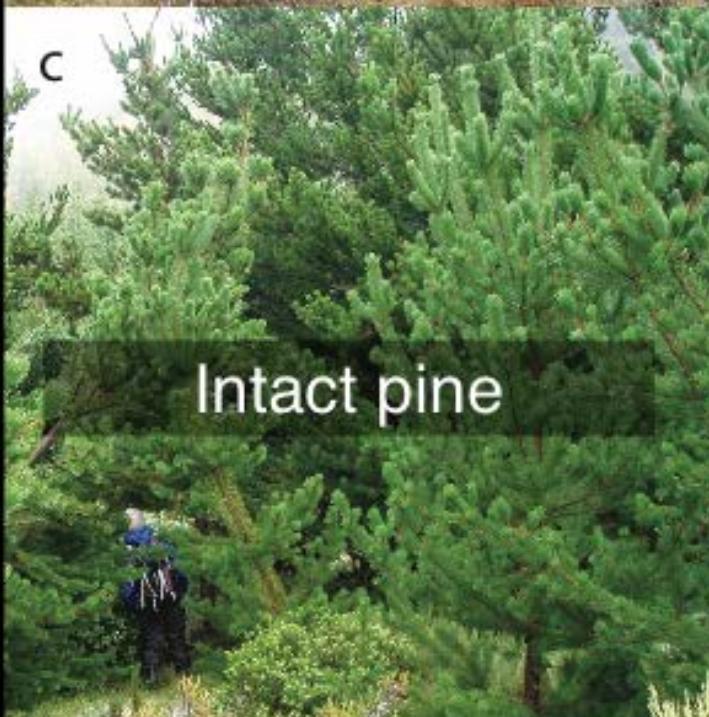
b

Intermediate Control



c

Intact pine



d

Late Removal

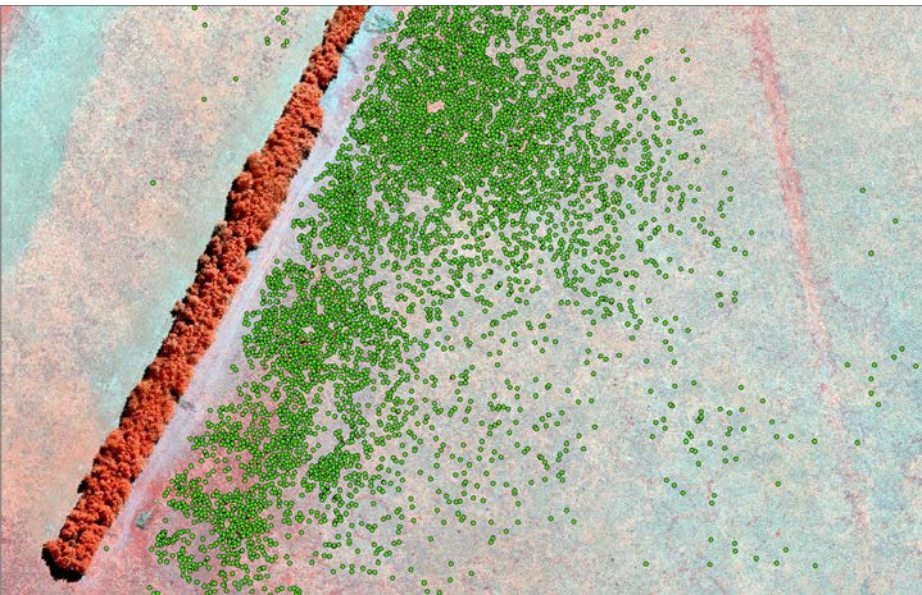


What impacts and legacies are wildings having?  
What benefits result from containing or controlling wildings?



# What is being done to improve the management and prevention of wilding conifer invasions?

Detection



Control



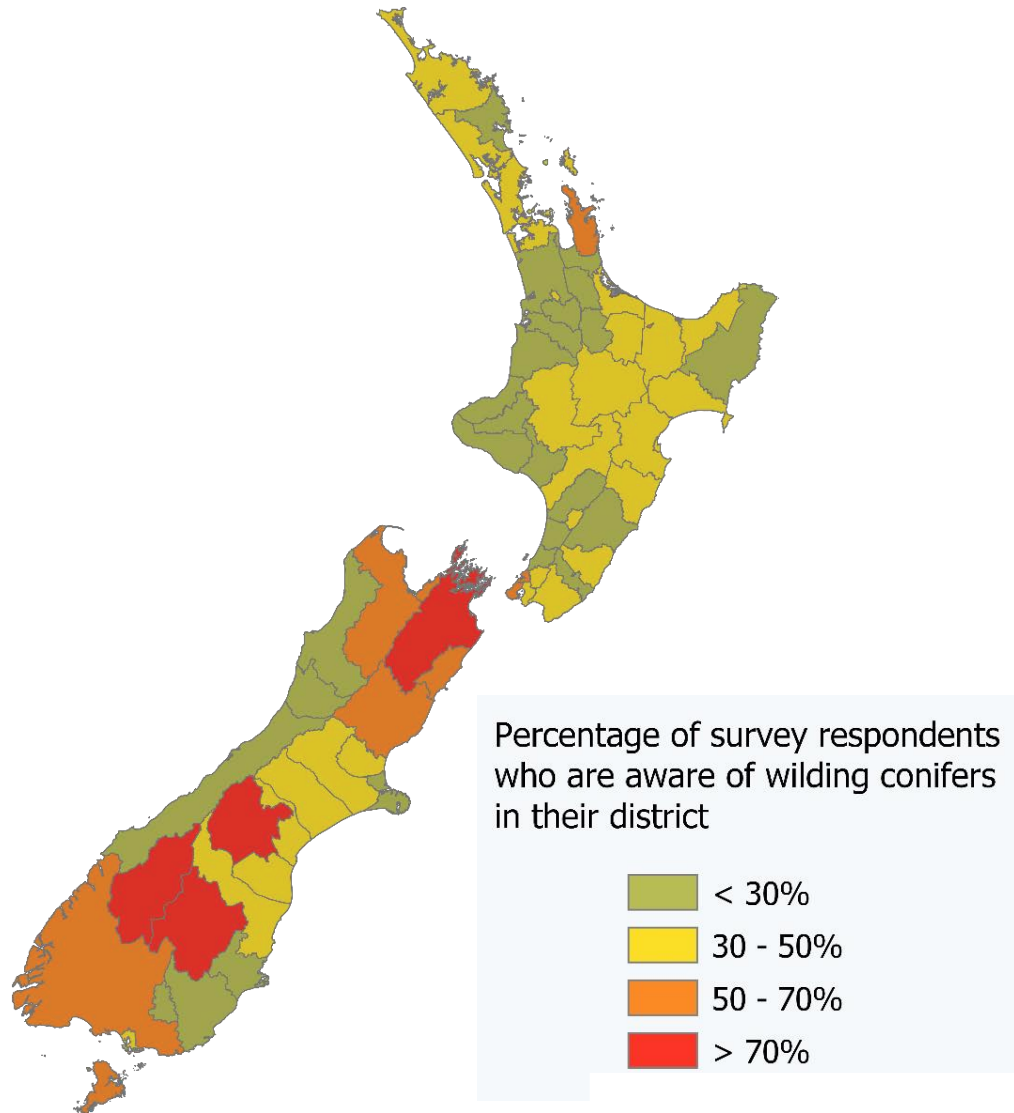
Prevention



**How can we better manage landscape-scale invaders?**



# Awareness of wildings varies among regions



## Growing view that wildings are harmful

	More harmful than beneficial	Neutral	More beneficial than harmful	Responses
2015	67.3%	-	<b>22.7%</b>	352
2017	64.8%	14.1%	<b>7.0%</b>	1405
2019	78.4%	9.9%	<b>3.5%</b>	1020



# Summary

- Wilding conifers are a major weed issue in NZ and internationally
- Major efforts to better understand wilding conifer invasions and improve their management are underway
- We're launching a new webinar series to highlight progress and stimulate discussion of what could be done next
- Let us know what you like to know more about!

[rowan@nzwildingconifergroup.org](mailto:rowan@nzwildingconifergroup.org)

[peltzerd@landcareresearch.co.nz](mailto:peltzerd@landcareresearch.co.nz)

<https://www.wildingconifers.org.nz/>



# Wildings Webinar Series

Next webinar on 12 August at 11am by Tom Etherington about distribution models of invasion risk

Email us with your suggestions of webinars/ topics you'd like to hear about at [webinars@nzwildingconifergroup.org](mailto:webinars@nzwildingconifergroup.org)

Reset zoom

