



New Zealand

GARDEN BIRD SURVEY

Tweet, tweet – making our birds count!

The journey so far and coming up... the 2020 survey

Bringing together people & biodiversity research



- Birds as environmental indicators
- Monitoring urban biodiversity
- Engaging New Zealanders
- Providing learning experiences
- Connection to nature

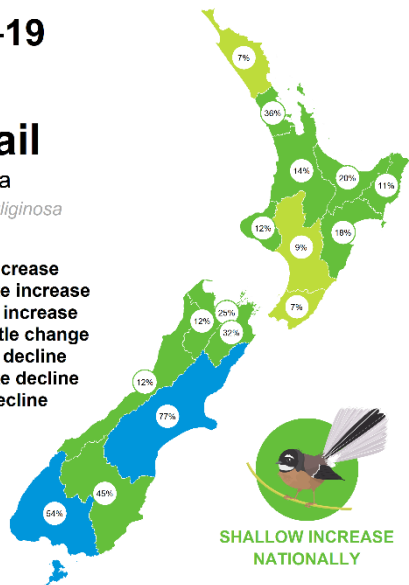
2009–19

Fantail

Pīwaiwaka

Rhipidura fuliginosa

- Rapid increase
- Moderate increase
- Shallow increase
- No or little change
- Shallow decline
- Moderate decline
- Rapid decline



MacLeod 2019 <https://datastore.landcareresearch.co.nz/dataset/bird-identification-tips>

Rodriguez & MacLeod 2019 <https://datastore.landcareresearch.co.nz/dataset/bird-masks>

More than
50,000
surveys
completed
since 2007

39,155
garden surveys
nationwide
since 2007

THANK YOU
to all our volunteer
bird counters!

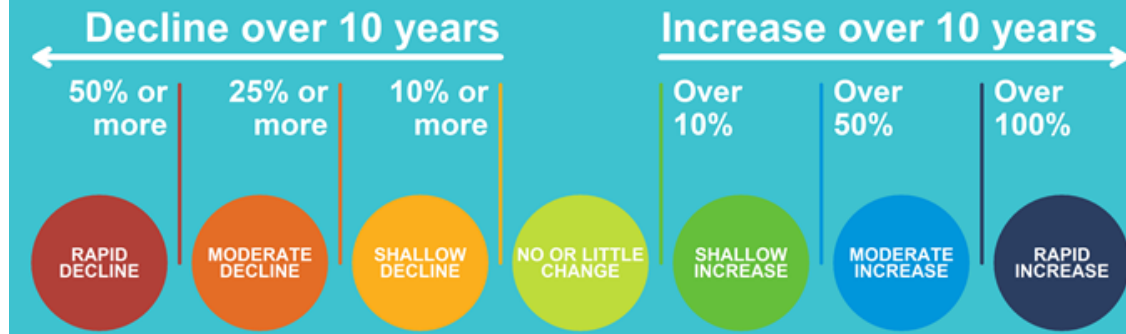


Smart analysis techniques



- % change in bird counts – 14 common species
- Accounting for:
 - # of gardens at each spatial scale
 - Urban vs. rural setting
 - Birds fed or not
 - Repeated measures over time

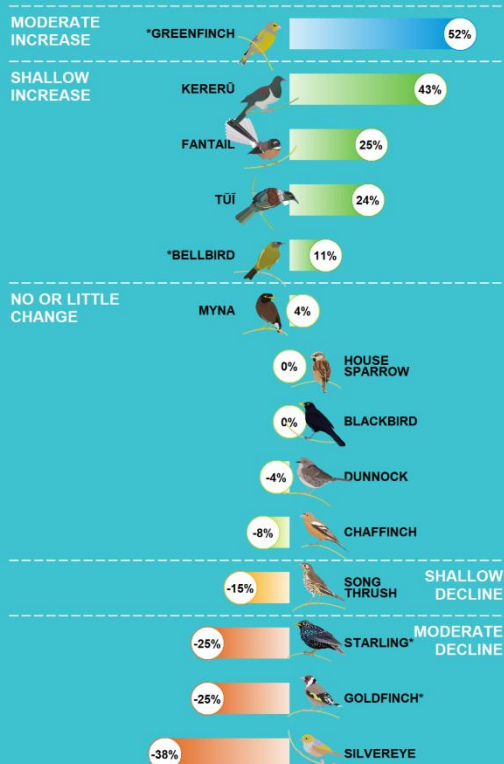
Drawing attention to changes in counts of potential concern or interest



NATIONAL PICTURE

How have garden bird counts changed?

2009–19



2014–19



* Based on available data, evidence for these species' estimates is weak.
Data source: 35,786 and 19,912 garden surveys nationwide for 2009–19 and 2014–19.

Regional trends – tūī



How have garden bird counts changed across regions?

2009–19

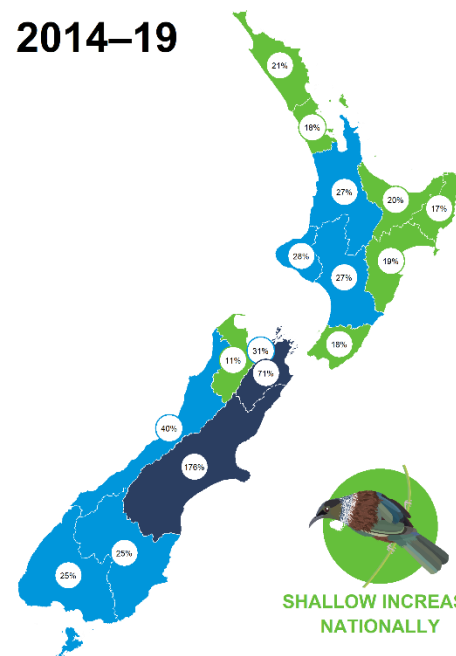
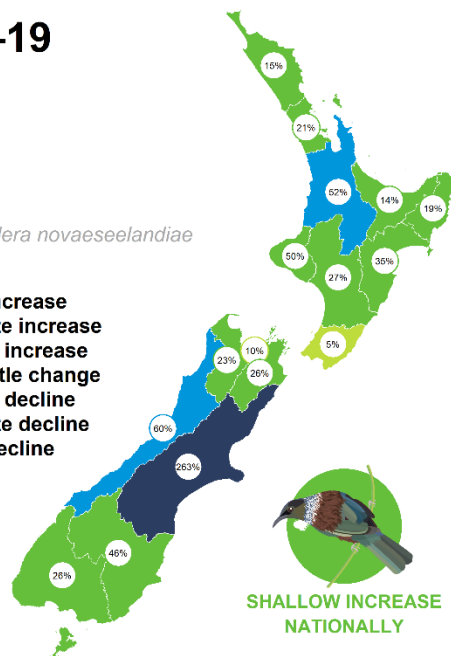
2014–19

Tūī

Kōkō

Prosthemadera novaeseelandiae

- Rapid increase
- Moderate increase
- Shallow increase
- No or little change
- Shallow decline
- Moderate decline
- Rapid decline



DATA SOURCE: 35,786 and 19,912 garden surveys for 2009–19 and 2014–19.

Regional trends – tauhou



Manaaki Whenua
Landcare Research



How have garden bird counts changed across regions?

2009–19

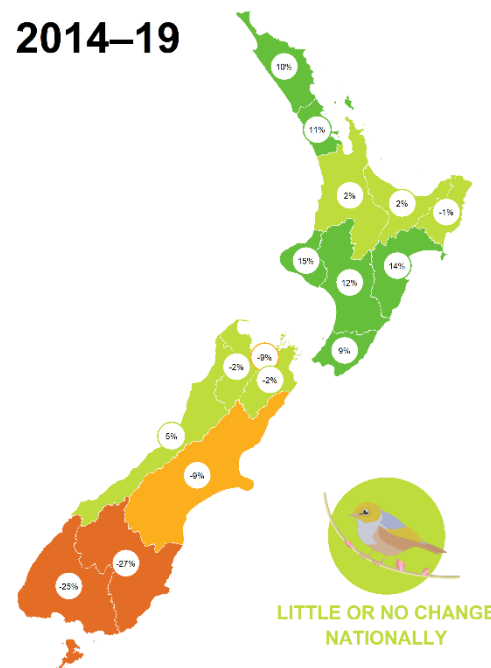
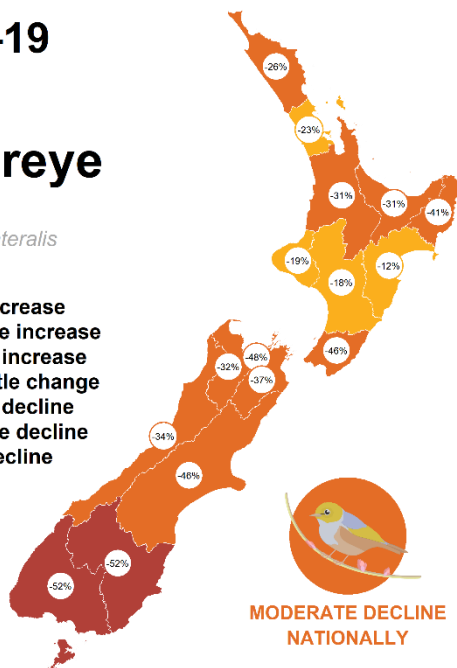
2014–19

Silvereye

Tauhou

Zosterops lateralis

- Rapid increase
- Moderate increase
- Shallow increase
- No or little change
- Shallow decline
- Moderate decline
- Rapid decline



DATA SOURCE: 35,786 and 19,912 garden surveys for 2009–19 and 2014–19.

Trends within region – tauhou



Manaaki Whenua
Landcare Research

CANTERBURY | Silvereye | Tauhou

How have garden bird counts changed in this region?



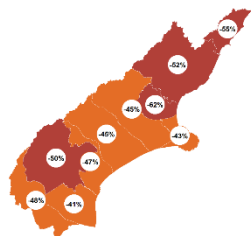
Manaaki Whenua
Landcare Research

WELLINGTON | Silvereye | Tauhou

How have garden bird counts changed in this region?

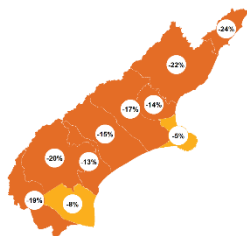


Last 10 years
2009–19



MODERATE DECLINE
REGIONALLY

Last 5 years
2014–19



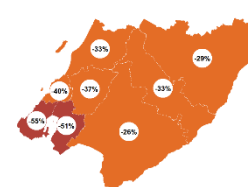
SHALLOW DECLINE
REGIONALLY

LITTLE OR NO CHANGE
NATIONALLY



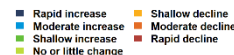
Data source: 35,786 and 19,912 gardens surveyed nationwide for 2009–19 and 2014–19 respectively.

Last 10 years
2009–19

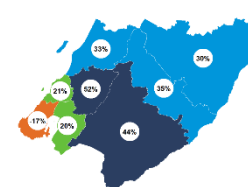


MODERATE DECLINE
REGIONALLY

MODERATE DECLINE
NATIONALLY



Last 5 years
2014–19



SHALLOW INCREASE
REGIONALLY

LITTLE OR NO CHANGE
NATIONALLY

Data source: 35,786 and 19,912 gardens surveyed nationwide for 2009–19 and 2014–19 respectively.

Participation & engagement



'Always good fun looking out for birds, they bring us great joy'

'Great fun, and always surprising'

'It's a fantastic way to feel involved in a bigger collective and meaningfully involved (without too much hassle or needing to join anything)'

'A meaningful way to involve all ages of family and friends for their ongoing awareness of birds in our neighbourhood'

'It's such an enjoyable experience - enforced but focused resting!'

'Slow down and just observe and listen to nature'

'Invigorated by being outside with nature'

'It was very peaceful to do'

Auckland Council



Te Kaunihera o Tāmaki Makaurau

Sustainable Business Council



wbcscd Global Network Partner

Auckland ZOO



WELLINGTON

Zoo



NIWA

Taihoro Nukurangi



ethique

Christchurch City Council



The Green Effect Trust
Te Roopu Kakariki



Plant & Food RESEARCH
RANGAHAU AHUMĀRA KAI



Sustainable Business Network

TARANAKI
like no other



TOITŪ
ENVIRO CARE

BANKS PENINSULA CONSERVATION TRUST



KERERŪ DISCOVERY

Clutha





Newshub.



THE PRESS



Wellington City Council

Our Partners



Taking part is easy

1. Select your garden, park, or school
2. Choose ONE day from June 27 - July 5
3. Look and listen for birds for ONE hour
4. Record the HIGHEST number of a bird species observed at one time
5. Submit your survey results online at gardenbirdsurvey.landcareresearch.co.nz





**What are you
doing to help
make our birds
count in 2020?**



Help make our birds count

27 June – 5 July 2020

gardenbirdsurvey.landcareresearch.co.nz

