

Environmental Big Data → Evidence for Policy?

Landcare Research Link Seminar 15

Feb 26th, 2013



Landcare Research
Manaaki Whenua

Robert Gibb
Informatics Science Leader

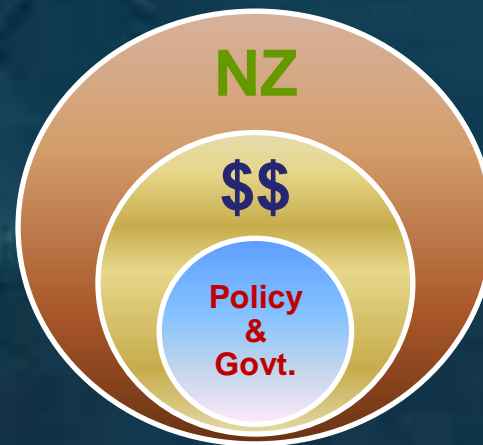
“scientists overestimate the utility
of what they know ...

while

... policy-makers underestimate
what they do not know”

Sir Peter Gluckman,
IPANZ, 2013-2-21

Global & Local Environment



PART 1 .. Policy & Data 2010

aspiration meets cold reality

PART 2 .. Fast forward to 2013

PART 3 .. Future perspective



MathCad ?..

R? ..

Excel? ..

"Data publication? – you mean the scientific paper"

.. Word !

"Processing log is:
file notebook or email diary"

Field
notebook

"Sharing is email &
USB sticks at a meeting"

"Master Copy is My Copy"

"ARCHIVE is a CD in a drawer"

"Don't forget to take one home"

"More disk storage is:
a bigger USB drive"

"Backup is IT Dept
responsibility"

Is this your scientist's
Data Management Reality?

"Email is for communication,
& SPAM is under control"

"The annual IT budget
constrains network
storage SAN size"

"We have a
Disaster Recovery Plan"

"Scientific Publications
are held by the library"

"Our procedures meet the
requirements of the Auditor
and the Public Records Act"

"HSM is the solution to total
file volume management"

"All network drives
are backed up to a
well defined
schedule"

"Off site and on-site
backup tape storage"

"Archive is, each
scientists' responsibility"

"We can't control data if it is on
another organisation's systems"

Is this your IT Dept's
Data Management Reality?

“International
Best Practice”

“Metadata &
Catalogues”

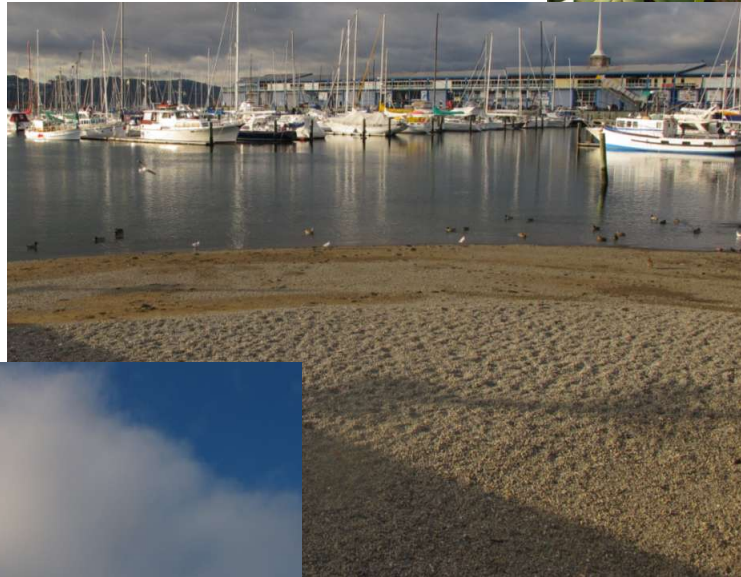
“Scientific Quality
is measured in
Publications & Reports”

“International
Data Standards”

“We expect
Best-of-breed
Multi-agency,
Collaborative teams”

“We fund results,
Data Management
is presumed”

**Is this Your
Funder's View?**



MathCad &...

grid-R &...

K-Excel &.

"Processing is K-wave scripted,
grid-enabled, shareable &
publishable for access anywhere"

"Data publication is a in web-
repository, with documentation,
reports & processing scripts"

.. K-Word !

real-time sensors

PDA
e-notebook

"ARCHIVE is Google-able ..

" .. in the field and from home"

"Sharing is via secure
managed web-service"

"Master is Versioned"

"More disk storage is:
available everywhere"

"Backup is IT Dept
responsibility"

The scientist in the complex real world ...

"Science Collaboration tools pervade the science process"

"The annual budget constrains network grid-storage pool"

"Disaster Recovery Plan: storage is replicated globally:"

"Data publication is in a web-repository, with documentation, reports & processing scripts"

"Our procedures define the standards for the Auditor and the Public Records Act"

"the pool is like cloud storage on steroids for NZ science,"

"All storage is replicated, & distributed"

"Data is lifecycle managed on inter-generational timescales"

"Archive is: persistently referenced repository"

"Staff in other organisations have controlled access to our in-house systems"

The IT Dept's NZ-science Club

Stakeholders as on-line participants in NZ Science

The IT
Dept's
NZ-science
Club

The Scientist in the
complex real world ...

PART 1 .. Data & Policy 2010

PART 2 .. Fast forward to 2013

POLICY+ → DATA+ MAPPING+

PART 3 .. Future perspective

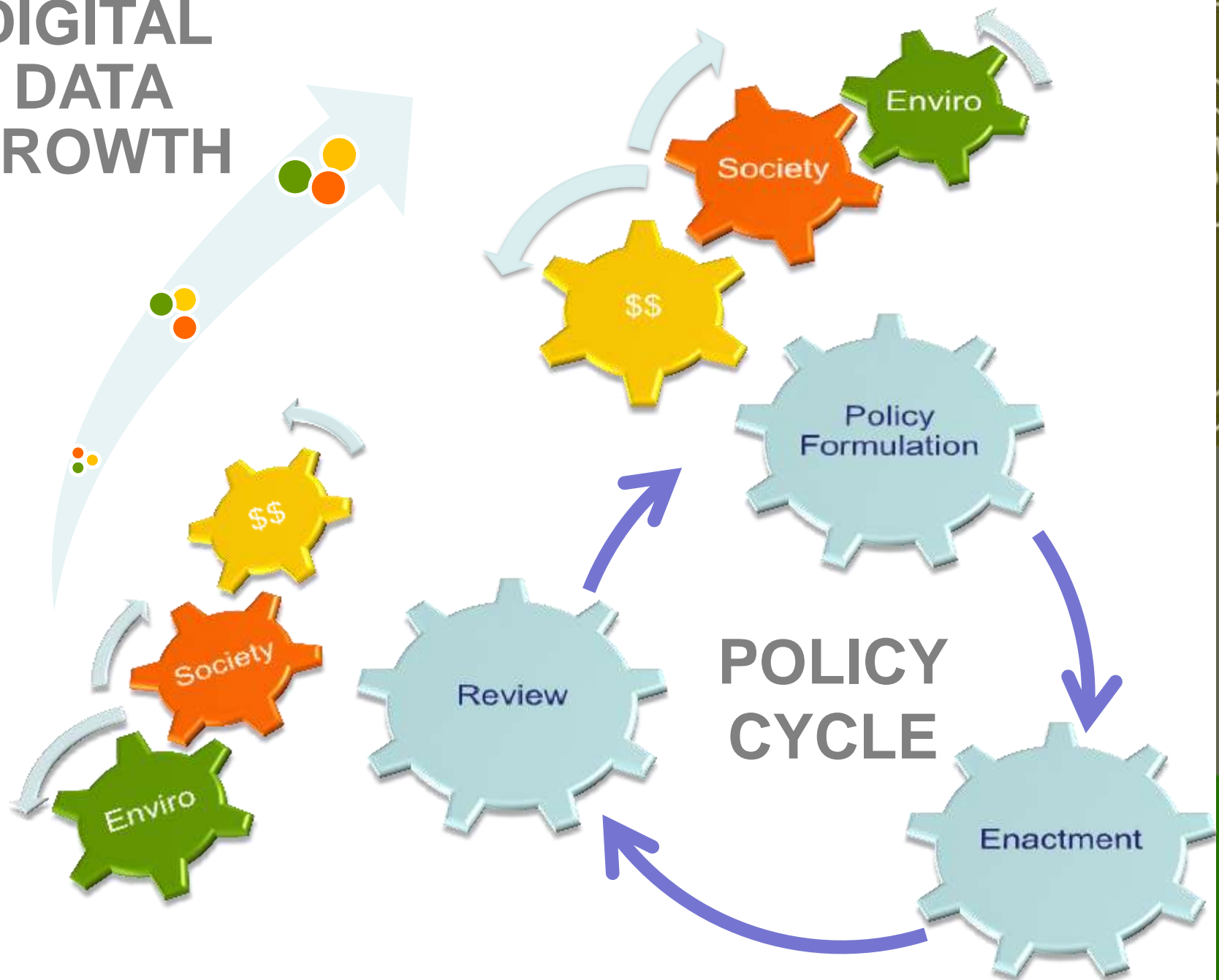
POLICY+

- New Zealand Government Open Access and Licensing (NZGOAL)
- MoRST Environmental Data Management Policy Statement
- Significant \$\$s moved from vote **Environment** to vote **Science**
to do targeted research to enhance LCDB data-product &
deliver LCDB3 & LCDB4 as by-products of Kyoto imagery

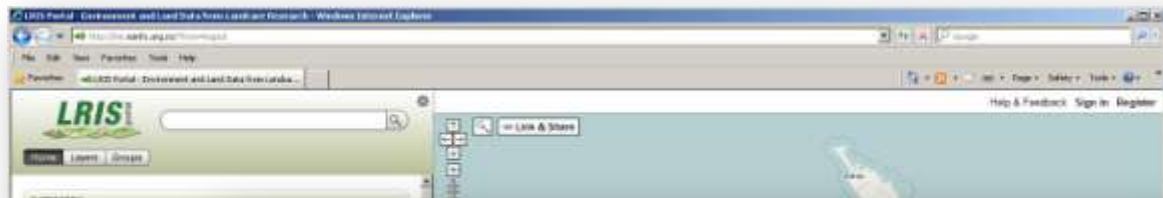
POLICY+ pivotal events in 2010

... that influenced data investment behaviour

**DIGITAL
DATA
GROWTH**



DATA+





- Launched August 2010
- Data download focus
- Minimal visualisation capability
- Aimed at GIS professionals
- Requires registration
- Uses existing open source technologies
- Strong standards-based metadata component
- Many formats supported and different projections
- Web services
 - Catalogue Service - linked to data.govt.nz, GEOSS
 - WFS – Simple features
- Potential for user uploads and user comments

not just Landcare Research

... but also **linz** data service,

niwa environmental information catalogue

and **data.govt.nz** – which harvests these catalogues

DATA+

MAPPING+

Principles

- K.I.S.S.
- Focus more on presenting knowledge and information rather than data(sets)
 - Inform users, assist in their understanding
 - Not “just” maps
- Goal-based design – users with questions they want answered
- Re-usable – both software and data/map layers
- Extensible
- Implemented using open source software
- Built on best practice and open standards

First of the new portals

- Home page with good explanatory information
- Google maps-like navigation
- Reusable BASE layers from LINZ topographic data
- High quality on-screen cartography
- Speed of map redraws/zooms/pans
- Search by coordinates/location/address
- Use of metadata, legends and explanatory information to inform user
- Reuses existing link to soil fact sheets generator
- High quality hard copy cartography (PDF)



thematic focus, it has been general user although expect the coming months additional added to Our Environment can be answered.



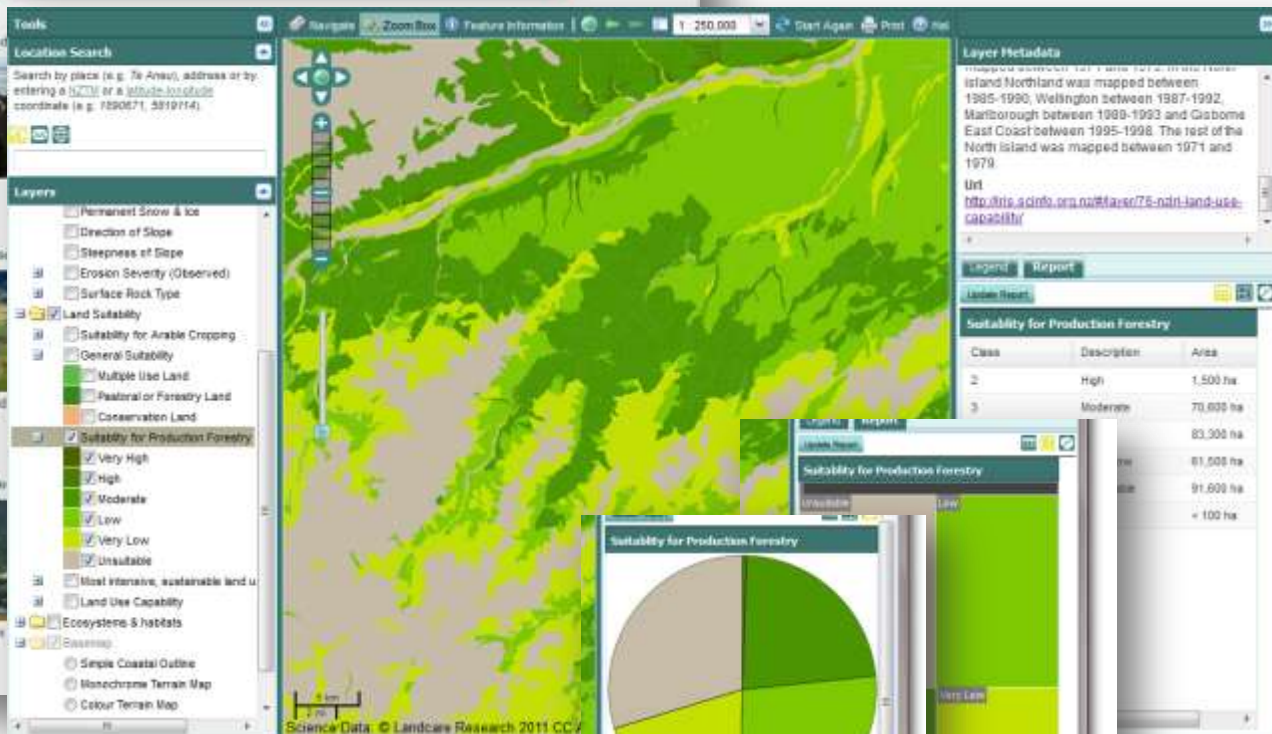
What is the surface rock like?



What is the land capable of being used for?

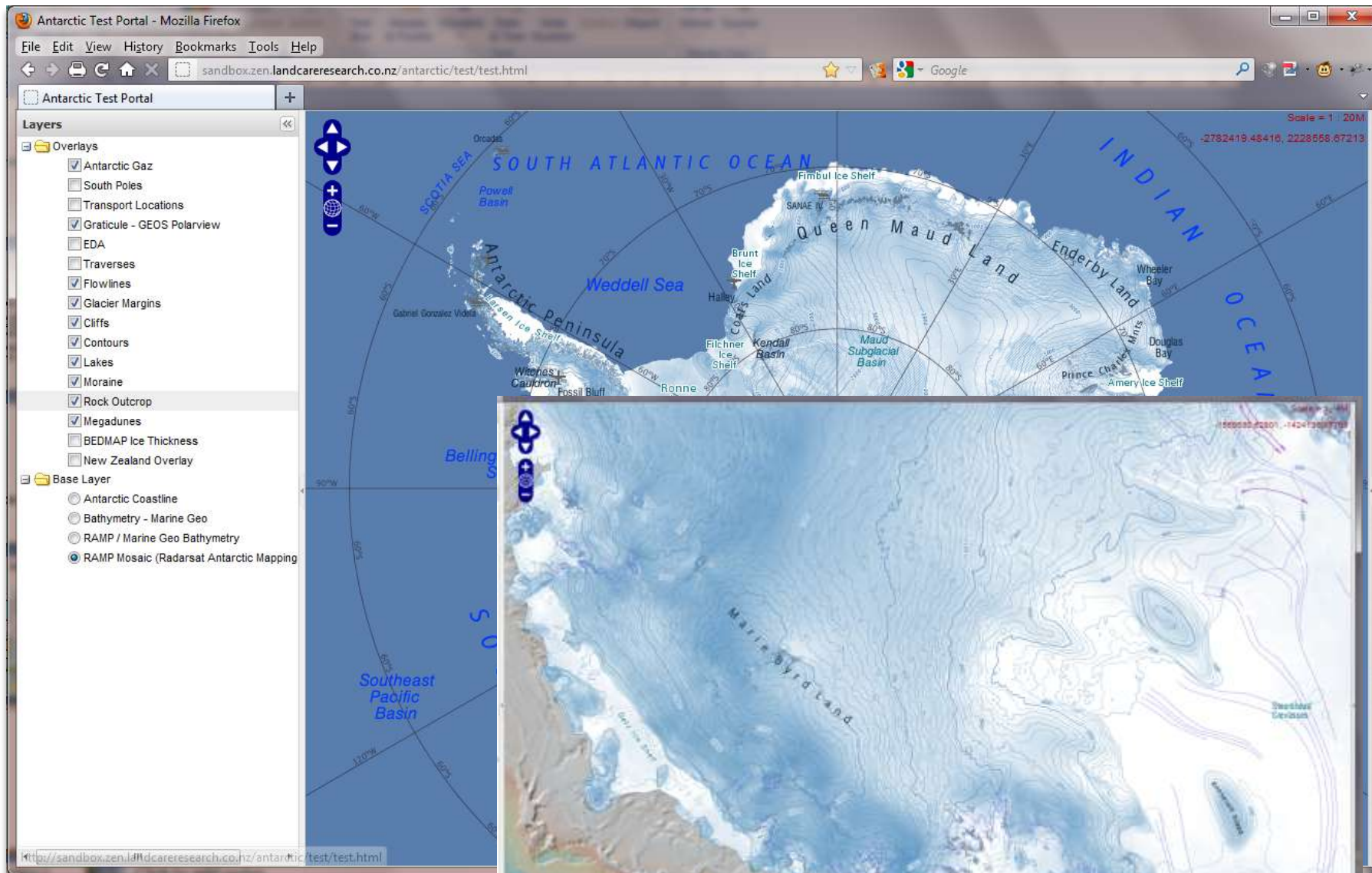


What vegetation would I find?



Second of the new portals

- S-map like features +
- Targeted at interested lay person but of value to scientist also
- Information pop-ups instead of factsheets
- Where available, links to LRIS data layers
- Reuses BASE layers and context layers
- More extensive metadata, legends and explanatory information to inform user
- Starts to introduce data visualisation & reporting
- Roadmap for further development



Project

Staff

Graphics

Get Geological Profile

Get Geological Cross-Section

Geological Cross Section

Section name:

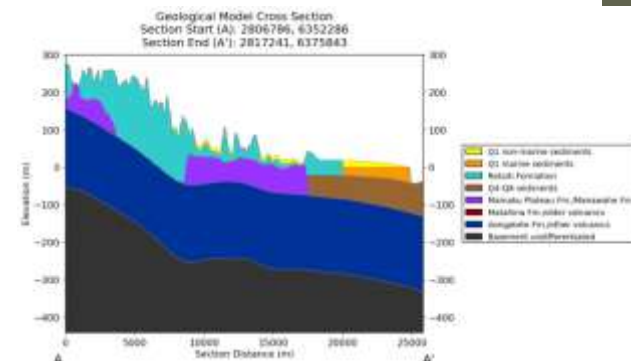
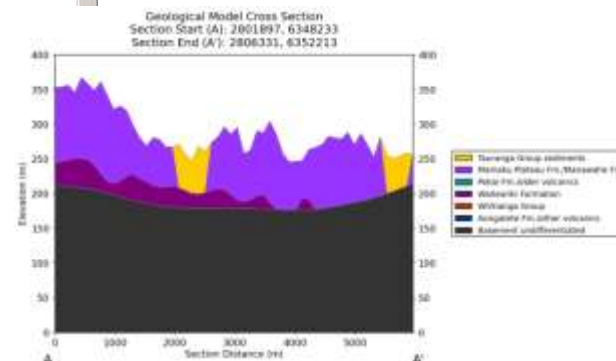
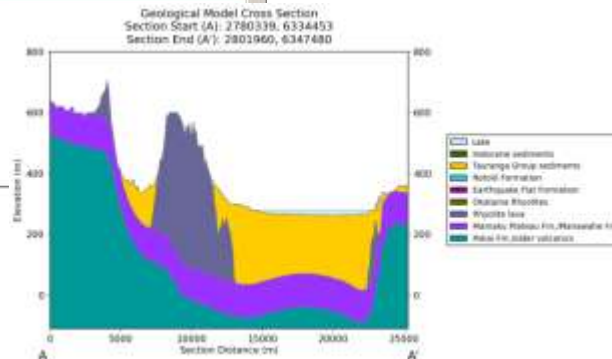
Start of section

Enter your location, either street address or coordinates

Please enter your street address below:

or if you know your location enter it here

NZMG	NZTM	WGS84
NZMG		
Easting	<input type="text"/>	<input type="button" value="Reset"/>
Northing	<input type="text"/>	



each portal is tailored for a specific audience
... are **your needs** catered for?
come and talk to us

MAPPING+

PART 1 .. Data & Policy 2010

PART 2 .. Fast forward to 2013

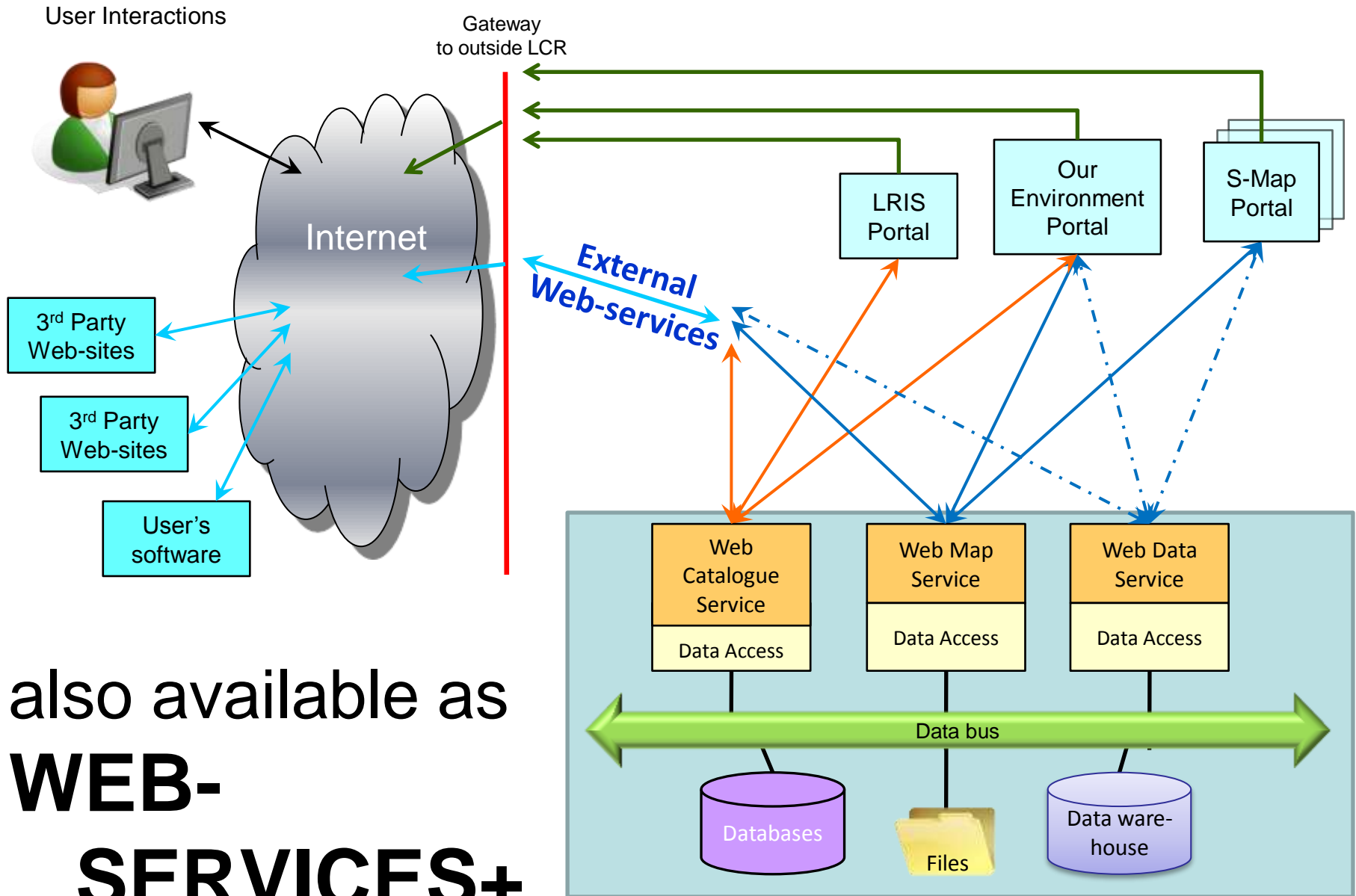
PART 3 .. Future perspective

WEB-SERVICES+

+ BIG-DATA → POLICY++

WEB-SERVICES+

DATA+ and MAPPING+ content ...



also available as
WEB-SERVICES+

not just **Landcare Research**

... but also **gns** web-services & **niwa** web-services
and **horizons.govt.nz** with other RCs

WEB-SERVICES+

+ BIG DATA

BIG-DATA ... what is it?

Not large homogeneous data sets

Rather a fire-hose of diverse data from
real-time internet usage &
web-service data feeds

With potential for real-time feedback to
influence individual decision-making
eg via smart-phone

BIG-DATA ... for example

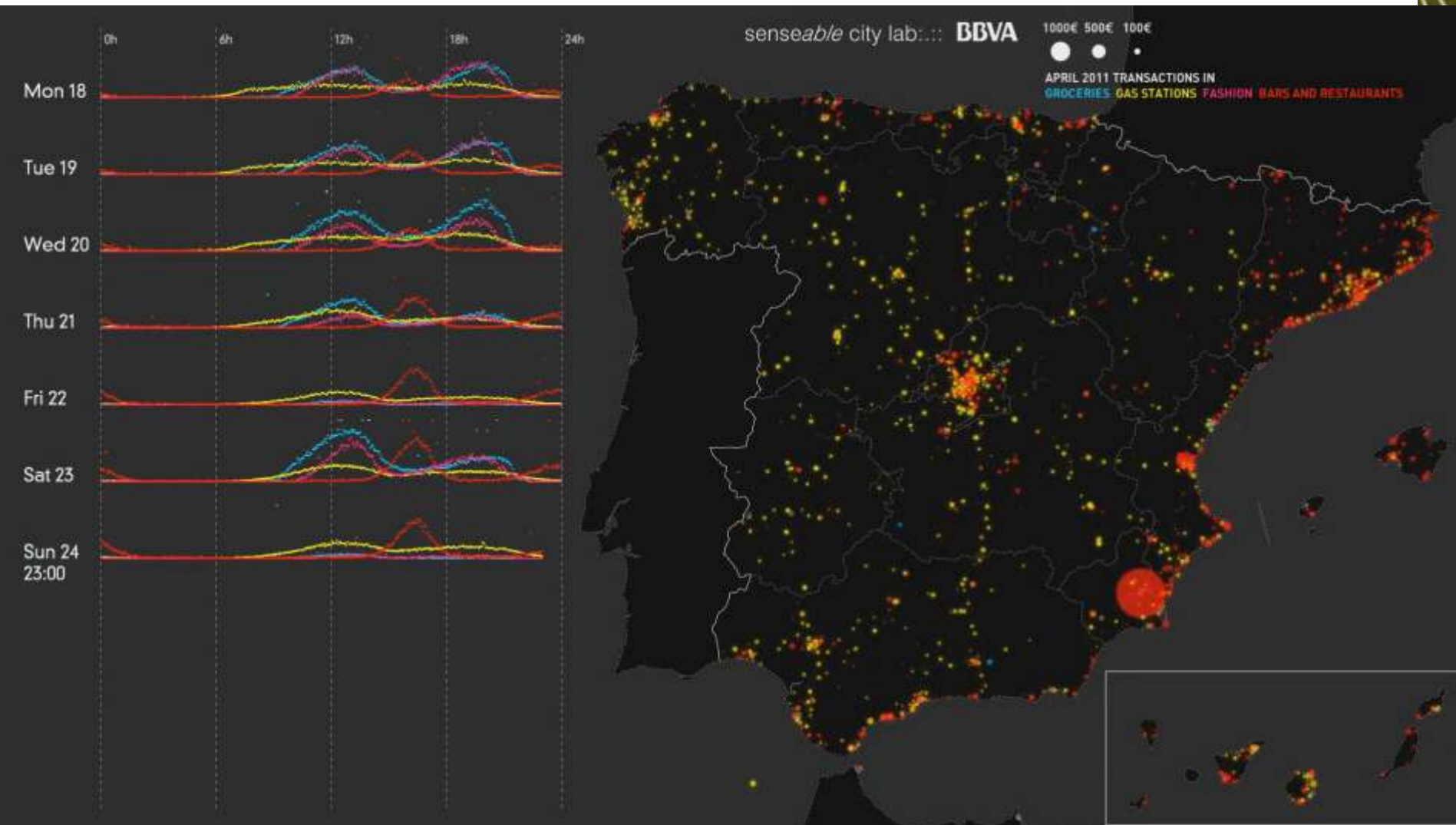
How should I travel to a cross-city appointment?

walk, jog, bicycle, public transport, car or **combination**

web-service analyses routes based on: current gps position; appointment address & time; real-time feeds of traffic flows, public transport bus and train locations, routes & timetables; green-bike usage patterns & availability; congestion statistics during the trip; and ... relative risks of being late

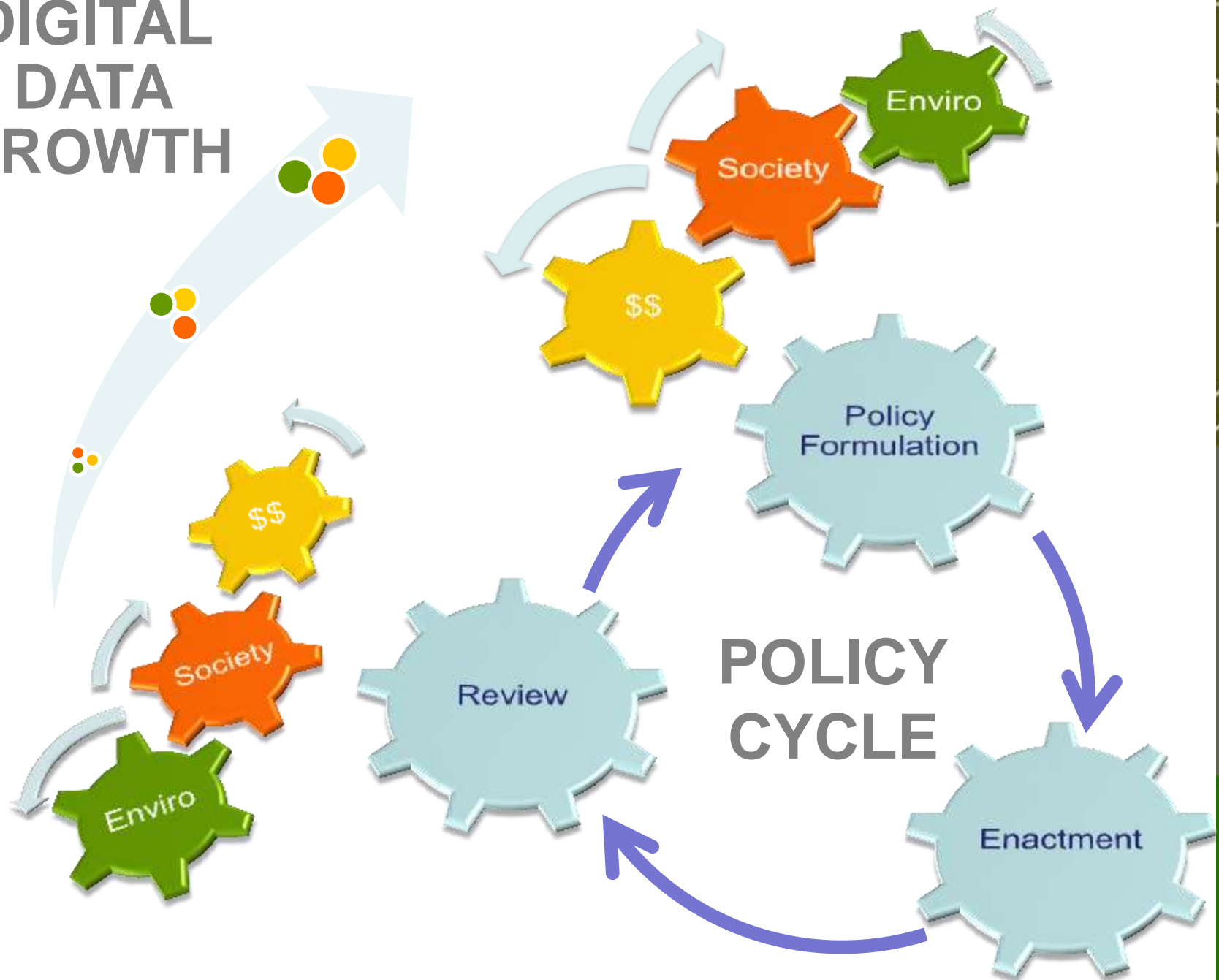
app consumes web-service & advises **fastest**, **cheapest**, **personal fitness target** &/or **greenest** options which update continuously as travel progresses & situation changes

Social Behavioural Big-Data



Spanish credit-card spending Easter 2011

**DIGITAL
DATA
GROWTH**



Social Behaviour Big-Data with Environmental Impact ... 201?

What if data is available real-time & instead of matching \$ transactions with
Groceries, **Fuel**, **Fashion** and **Bars & Restaurants**

... **we match** \$ transactions against map of embodied energy footprint, or map of employment impact, or health outcome alternatives, or balance of trade impact ... or ?



How would ... this impact policy formulation ? or policy review ?

Environmental Big-Data ... 20??

There are many private sensors in the environment

eg soil moisture for irrigation control or
heavy farm equipment monitoring to schedule maintenance
but **is the data available?**

- ... should it be as **proof of 'license to operate'**
- ... what policy would encourage or mandate availability
- ... how would this influence world perception of

'NZ 100% Pure' ?