



Soil Health and Resilience: oneone ora tangata ora

Bryan Stevenson, Garth Harmsworth, Robyn
Kannemeyer, Dean Stronge

Facilitator: Margaret Kilvington



Soil Health and Resilience: oneone ora tangata ora



- Welcome & introductions, Tīmatanga, mihi whakataū
- Understanding what's driving soil management and policy

Lunch

- Towards an integrated framework for soil health

Afternoon tea

- Facilitating change in soil health management and policy
- Summary/Key points
- Whakamutunga (close 4pm)



Soil Health and Resilience: oneone ora tangata ora

Timatanga &
Introduction

Understanding
drivers for soil policy

Towards an
integrated approach

Facilitating Change

Key points

Whakamutunga

Soil Health and Resilience: oneone ora tangata ora



Welcome & introductions,
Tīmatanga, mihi whakatau,

Outline & purpose for the day

Context: “challenges for soil health
in Aotearoa”

Presentations and discussion

Soil Health and Resilience: oneone ora tangata ora

**Timatanga &
Introduction**

Understanding
drivers for soil policy

Towards an
integrated approach

Facilitating Change

Key points

Whakamutunga



Why are we here?



Soil Health and Resilience: oneone ora tangata ora

Timatanga & Introduction

Understanding drivers for soil policy

Towards an integrated approach

Facilitating Change

Key points

Whakamutunga



Today is about being collective

All the brains in the room!

Soil Health and Resilience: oneone ora tangata ora

Timatanga & Introduction

Understanding drivers for soil policy

Towards an integrated approach

Facilitating Change

Key points

Whakamutunga

In your tables think about:



- Introductions and relationships
- Exercise aims and instructions
 - Facilitation (ensures all perspectives heard)
 - Notetaking (please take good table notes – AND write in large writing for plenary feedback)
 - Timekeeping (keep everyone on track)
 - Reporting back. Who is going to report back (concisely!)



Soil Health and Resilience: oneone ora tangata ora

Timatanga & Introduction

Understanding drivers for soil policy

Towards an integrated approach

Facilitating Change

Key points

Whakamutunga



If you could change one thing about the way we are making soil health policy what might that be?



Soil Health and Resilience: oneone ora tangata ora

Timatanga & Introduction

Understanding drivers for soil policy

Towards an integrated approach

Facilitating Change

Key points

Whakamutunga



Understanding what's driving soil management and policy

Develop a shared view on soil health management and policy in New Zealand: what is happening now, what is shaping this, and what could potentially change.

Presentations, workshop, discussion & feedback



Soil Health and Resilience: oneone ora tangata ora

Timatanga & Introduction

Understanding drivers for soil policy

Towards an integrated approach

Facilitating Change

Key points

Whakamutunga

In your tables think about:

1. What are the are the soils **issues** facing NZ now – and on the horizon?
2. Who **needs to change** & in what way?/what needs to happen to address these issues ?
3. What are we actually making **current policy about** at National/Regional/Sector levels?

Feedback & Discuss:

Who is making this policy?
What are the patterns/gaps?



Also think about...

- **Facilitation** (ensures all perspectives heard)
- **Notetaking** (please take good table notes – AND write in large writing for plenary feedback)
- **Timekeeping** (keep everyone on track)
- **Reporting back.** Who is going to report back (concisely!)

Soil Health and Resilience: oneone ora tangata ora

Timatanga & Introduction

Understanding drivers for soil policy

Towards an integrated approach

Facilitating Change

Key points

Whakamutunga



Bryan and Garth presentations – please please please –
keep under 10 mins each

Soil Health and Resilience: oneone ora tangata ora

Timatanga &
Introduction

**Understanding drivers
for soil policy**

Towards an
integrated approach

Facilitating Change

Key points

Whakamutunga



Plenary

[5 mins in tables – what is your insight from this?]

e.g.

- What did you hear that would be useful?
Disagree with?
- What changes does this suggest about the way we currently approach soil health policy?
- What are the implications at different scales and for different players?



Soil Health and Resilience: oneone ora tangata ora

Timatanga &
Introduction

**Understanding drivers
for soil policy**

Towards an
integrated approach

Facilitating Change

Key points

Whakamutunga

Lunch – please be back by 12.45pm!
Check your “dots” = new table





Towards an integrated framework for soil health

Develop shared criteria, and elements for an integrated framework that clarifies key relationships and drivers in soil health.



*Presentations, workshop,
discussion & feedback*

Soil Health and Resilience: oneone ora tangata ora

Timatanga & Introduction

Understanding drivers for soil policy

Towards an integrated approach

Facilitating Change

Key points

Whakamutunga



Post lunch

Brainstorm!

Soil Health and Resilience: oneone ora tangata ora

Timatanga & Introduction

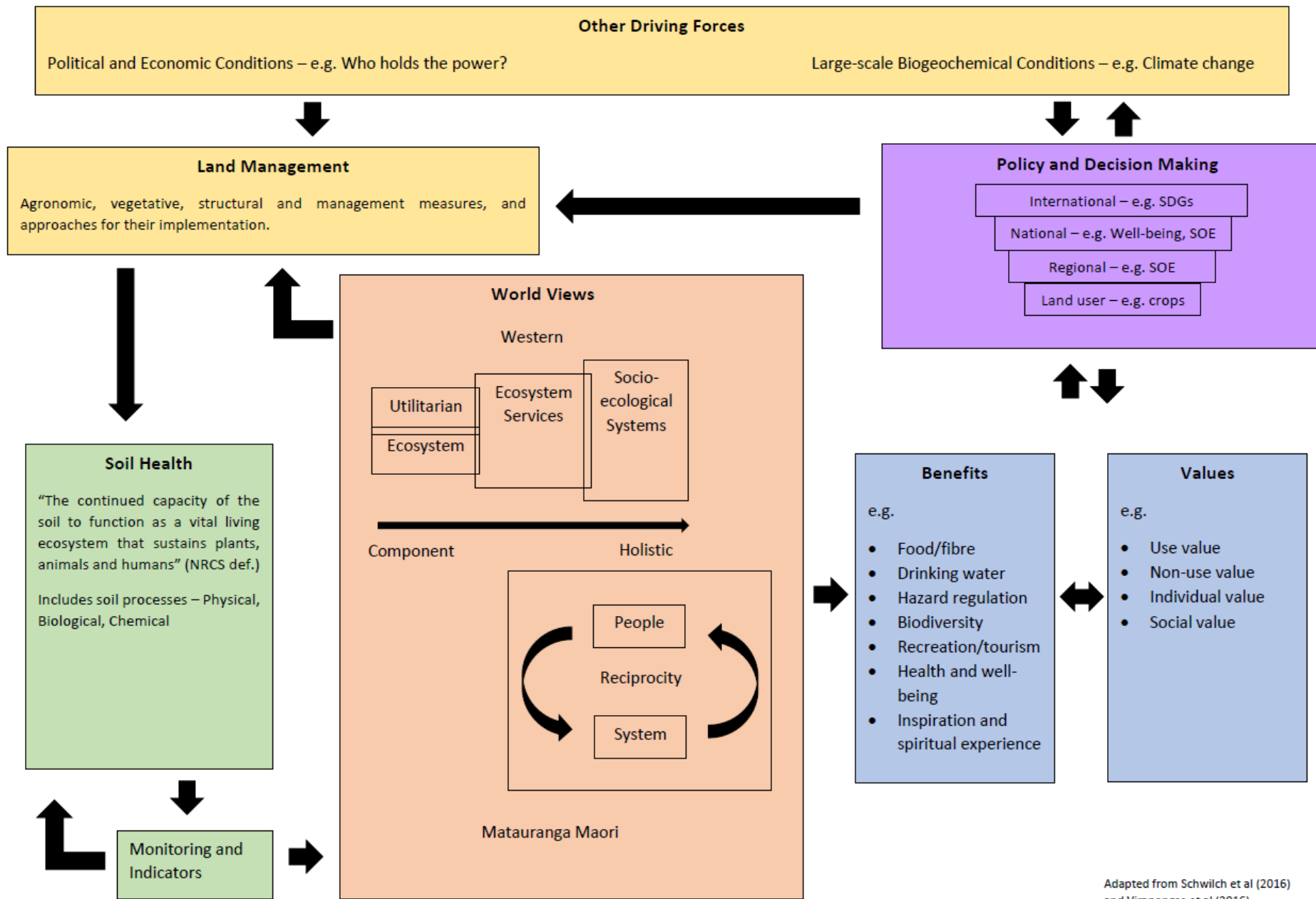
Understanding drivers for soil policy

Towards an integrated approach

Facilitating Change

Key points

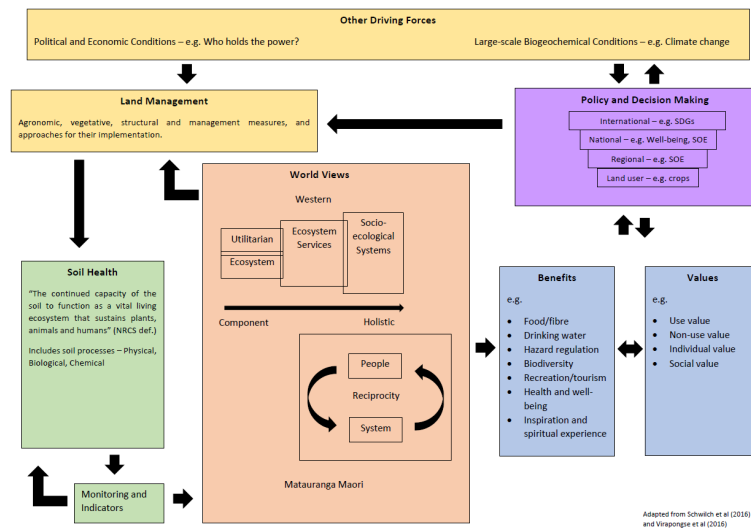
Whakamutunga



Adapted from Schwilch et al (2016) and Virapongse et al (2016)

In your tables think about:

- What would you change?
- Draw your own changes/links
- Add post-its



Soil Health and Resilience: oneone ora tangata ora

Timatanga & Introduction

Understanding drivers for soil policy

Towards an integrated approach

Facilitating Change

Key points

Whakamutunga

Plenary

[10 mins in tables what is your insight from this?]



e.g

- What does this suggest to you about what an integrated approach to soils might look like?
- What are the policy challenges of a more integrated approach to soil health?
- What are the policy “pay-offs”?

Also think about who will...

- **Facilitate**
- **Take good notes**
- **Keep time**
- **Report back.**

Soil Health and Resilience: oneone ora tangata ora

Timatanga & Introduction

Understanding drivers for soil policy

Towards an integrated approach

Facilitating Change

Key points

Whakamutunga



Facilitating change in soil health management and policy

Explore options and challenges for defining management and policy outcomes and monitoring and reporting at different scales in an integrated approach to soil health.

Workshop, discussion & feedback



In your tables think about:

What needs to change over time?



What needs to change in next 5 years?

What needs to change in next 10 years?

What needs to change in next 2 years?

e.g.

In how different groups view soils?

In local /regional/ national policy?

In who is involved & relationships?

In the types of outcomes to aim for over time?

Soil Health and Resilience: oneone ora tangata ora

Timatanga & Introduction

Understanding drivers for soil policy

Towards an integrated approach

Facilitating Change

Key points

Whakamutunga

In your tables think about:

What would be the implications for how we measure/monitor soil health?

Locally
Regionally
nationally

How will we know we are on track over next 5 years?

How will we know we are on track over next 10 years?



How will we know we are on track over next 2 years?

Soil Health and Resilience: oneone ora tangata ora

Timatanga & Introduction

Understanding drivers for soil policy

Towards an integrated approach

Facilitating Change

Key points

Whakamutunga



Cuppa! (back by 3.30pm
please)



Soil Health and Resilience: oneone ora tangata ora



Summary,

Key points & take home messages

What next



Soil Health and Resilience: oneone ora tangata ora

Timatanga & Introduction

Understanding drivers for soil policy

Towards an integrated approach

Facilitating Change

Key points

Whakamutunga



Soil Health and Resilience: oneone ora tangata ora

Thank you



Brainstorm!

What would be the most visible signs of an integrated approach?

(list up to 5 – if you have more prioritise)

e.g.

Who is involved?

How do they link?

What is different to what you see today?

What are the outcomes you aim for and how are they different to discussed earlier?



Also think about who will...

- **Facilitate**
- **Take good notes**
- **Keep time**
- **Report back.**

Soil Health and Resilience: oneone ora tangata ora

Timatanga & Introduction

Understanding drivers for soil policy

Towards an integrated approach

Facilitating Change

Key points

Whakamutunga