



# GIANT REED SCALE

*Rhizaspidiotus donacis*



## History in New Zealand

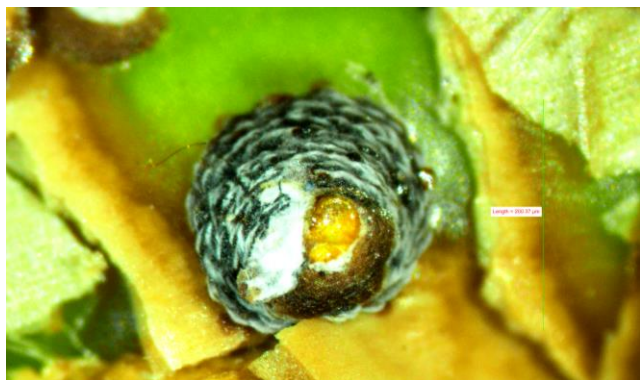
The giant reed scale insect is native to the Mediterranean region. It was first imported into containment in New Zealand for study in 2015 by Manaaki Whenua- Landcare Research. Permission to release the scale was granted by the EPA in early 2017. The first field release was made in 2021. Releases of the giant reed scale began in the USA in 2010. A gall wasp (*Tetramesa romana*) was also approved for release in New Zealand and is expected to complement the activity of the scale insect.

## How would I find/recognise it and what is its lifecycle?

Giant reed scales are usually hidden in the leaf sheaths, especially at the nodes and on developing shoots and rhizomes growing underground. Past attack is often revealed when nodes die and shrivel revealing old scales.

## How does it damage giant reed?

After a short-lived mobile 'crawler' stage, scale insects settle down, become immobile and feed on sap using piercing mouthparts. They protect themselves by secreting a brown waxy coating. Large



Scale insect

numbers of scale insects often cram themselves together killing nodes and stunting growth.

## Will it attack other plants?

No, the scale will only attack giant reed plants.

## How effective is it?

Research in the native range indicated that the giant reed scale reduced shoot growth by half. Its impact could potentially be greater in New Zealand, where parasitoids that attack the scale are absent.



Scale insects

## How can I get the most out of it?

The scale has not been widely released. Further releases throughout giant reed infestations are needed.

## How do I select a release site?

Read *Guidelines for selecting release sites for biocontrol agents*.

### **How do I collect it for release at other sites?**

---

Stem sections containing infested nodes can be cut using secateurs and transported to other sites where they can be planted within an infestation or tied to uninfested plants to allow crawlers to disperse.

### **How do I manage the release sites?**

---

Avoid any activities that will interfere with the scale insect, such as herbicide application. If you need to undertake control measures, then avoid the release site.

#### **For further information contact:**

Quentin Paynter  
Manaaki Whenua - Landcare Research  
Private Bag 92170  
Auckland Mail Centre  
Auckland 1142  
NEW ZEALAND  
Email: [paynterq@landcareresearch.co.nz](mailto:paynterq@landcareresearch.co.nz)  
Ph (09) 574 4123