

The Survey of Rural Decision Makers is a biennial survey of New Zealand’s primary sector conducted by Manaaki Whenua – Landcare Research since 2013. In 2023, there were ~5,200 respondents representing commercial and lifestyle farms, forests, and growing operations from Cape Reinga to Rakiura.

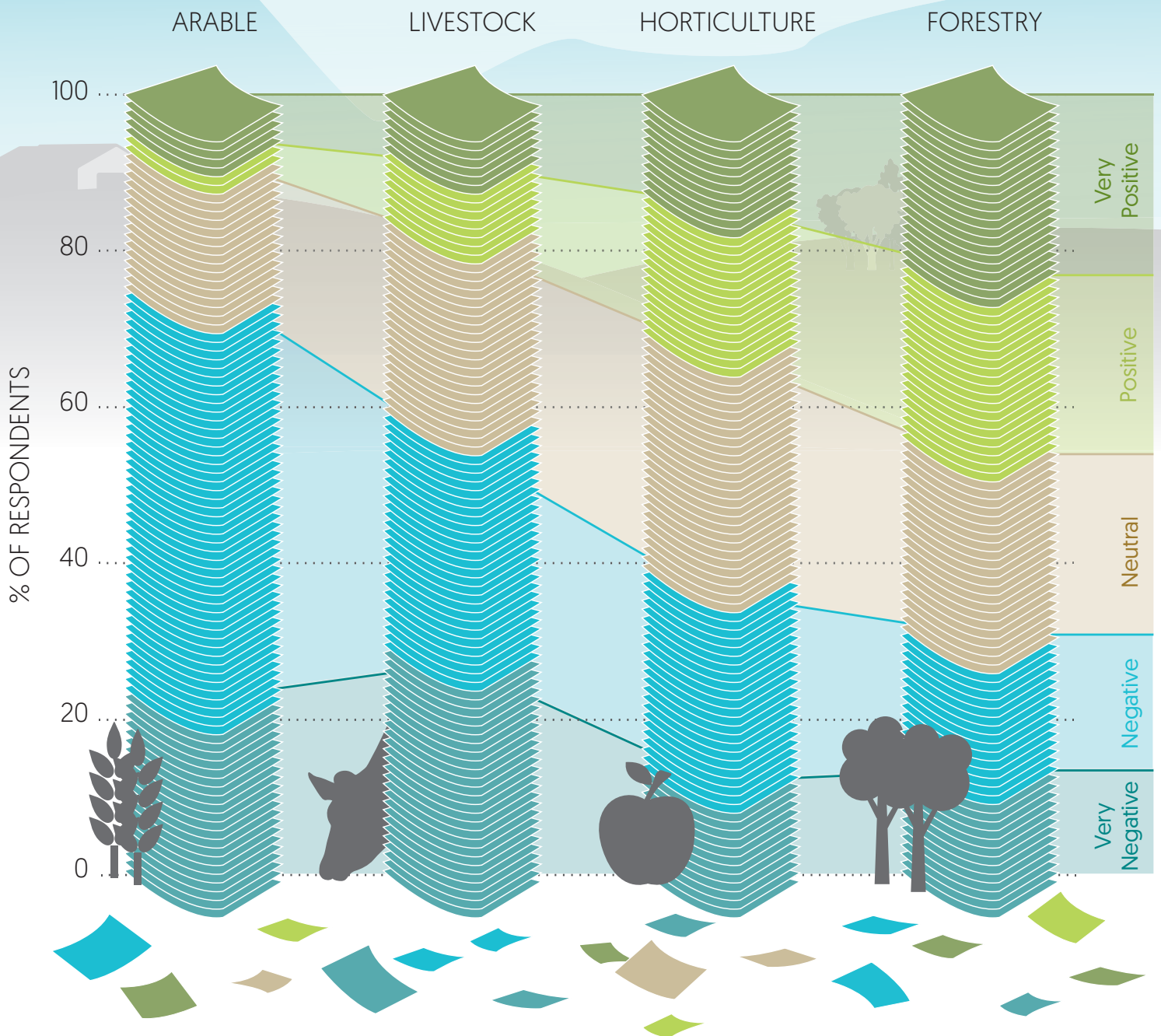
KEY RESULTS SHEET ONE:

# Rural regulation

Respondents to the 2021 Survey of Rural Decision Makers identified regulation as a significant cause of stress. We therefore updated the questionnaire in 2023 to include three key questions about rural regulation.

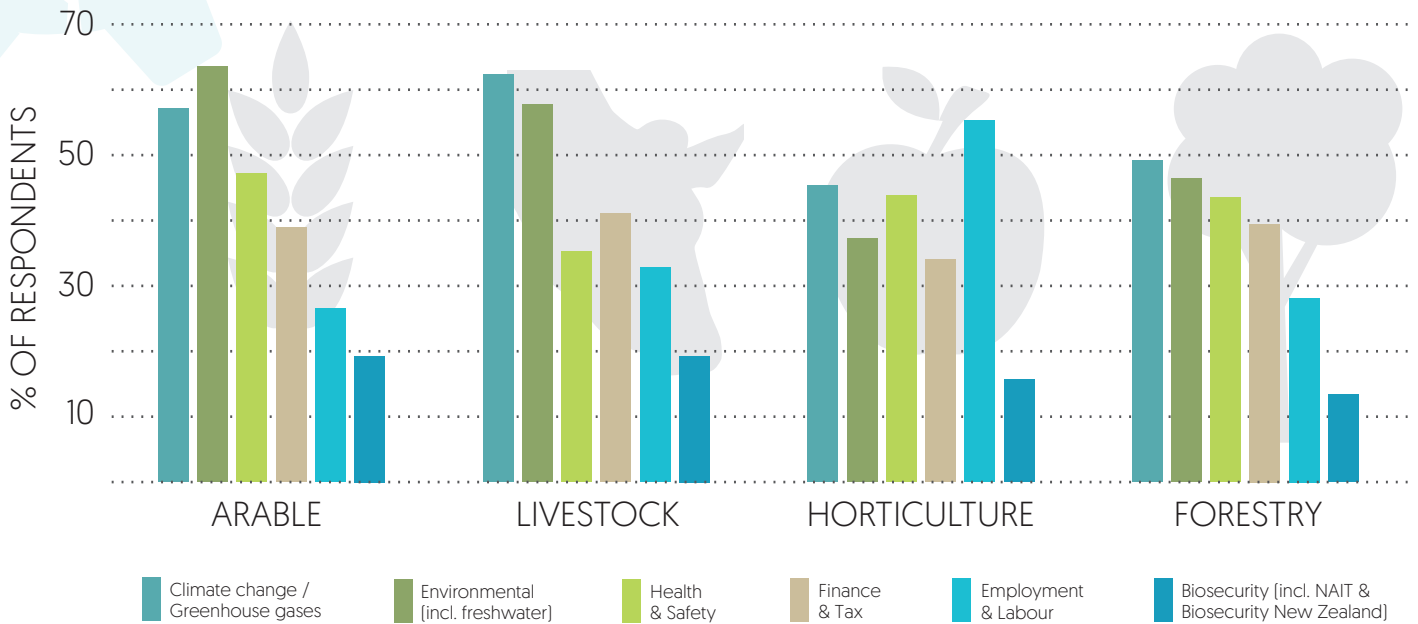
## HOW DO YOU FEEL ABOUT THE REGULATIONS FACING YOUR PROPERTY?

Arable and livestock farmers feel most negative about the regulations facing their properties. Horticulturalists and foresters are generally positive or neutral about the regulations they face.



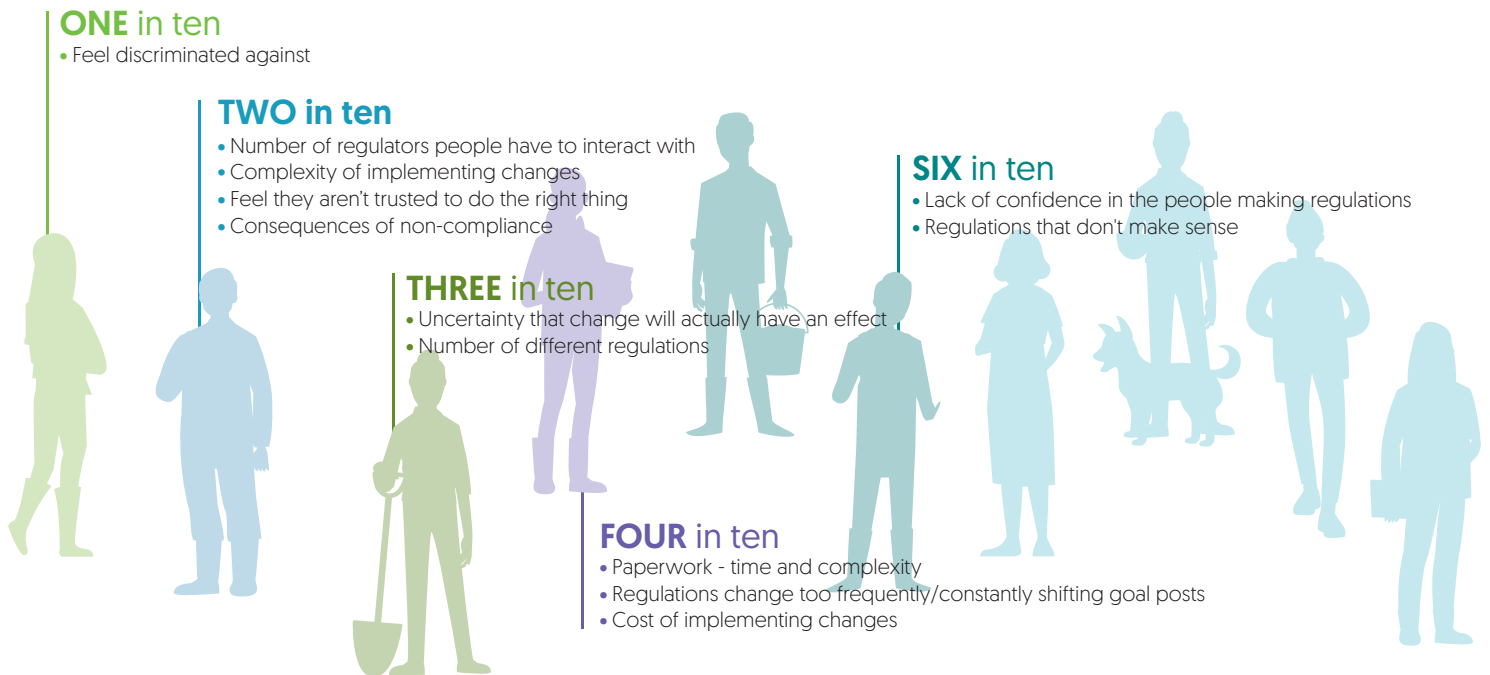
### WHAT TYPES OF REGULATIONS CONTRIBUTE MOST TO STRESS IN THE RURAL COMMUNITY?

Regulations relating to climate change and the environment are the greatest source of stress for farmers and foresters. Employment and labour regulations cause the greatest stress among horticulturalists.



### WHAT ASPECTS OF THE REGULATORY ENVIRONMENT DO OPERATIONS LIKE YOURS STRUGGLE WITH THE MOST?

Six out of ten respondents lack confidence in the people making regulations and struggle with regulations that don't make sense to them. Farmers, foresters, and growers all agreed that these were the most problematic part of the regulatory environment.



The Survey of Rural Decision Makers is designed to build a better picture of decision making at the farm level, tackling topics that cannot be easily addressed in official statistics or directly by organisations. It is a valuable resource for policy makers, regional councils, industry groups and businesses. For further information, please contact: Pike Stahlmann-Brown: brownp@landcareresearch.co.nz

Further results will be added to our website as they become available: [www.landcareresearch.co.nz/srdm-2023](http://www.landcareresearch.co.nz/srdm-2023)