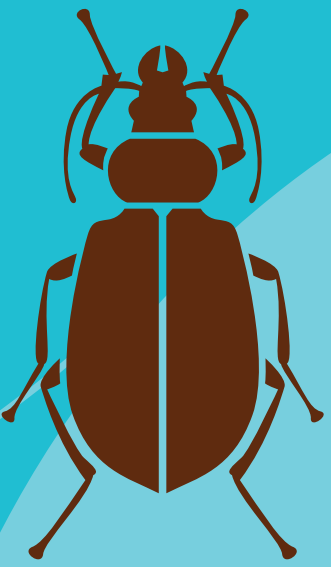




Manaaki Whenua  
Landcare Research

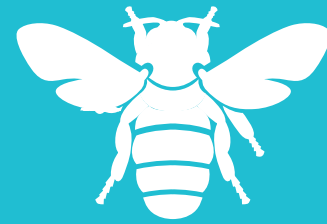
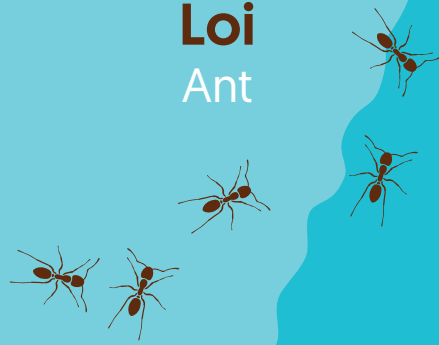
**Avi'ivi'i**  
Beetle



**E fia vae?**

How many legs?

**Loi**  
Ant



**Pi**  
Bee



**Apoga'leveleve**  
Spider

Some of these bugs live in Aotearoa – New Zealand, some live in Samoa, a small South Pacific island, and some live in both places! You can help identify many bugs found in your NZ backyard by using the free interactive tool 'What Is This Bug' – visit: [landcareresearch.co.nz/what-is-this-bug](http://landcareresearch.co.nz/what-is-this-bug)

**Atualoa**  
Centipede



What is this bug?

# Ole a le bug?

**Pepe ae**  
Swallowtail Butterfly  
(endangered)



**Lago fua**  
Fruit flies



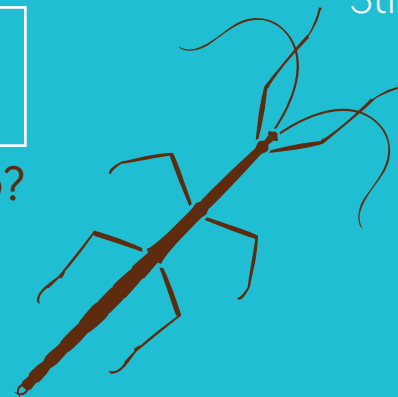
**Anufe**  
Caterpillar



**Ole a le mea a le bug e fai?**

What does this bug do?

**Iniseti laau**  
Stick insect



**Lago tele**  
Dragonfly



**Namu**  
Mosquito

**Ole a le lanu?**

What colour is it?

**Manu'ainiu popo**  
Coconut rhinoceros beetle  
(not found in NZ)

**Akarava**  
Scorpion  
(not found in NZ)



**Se**  
Grasshopper



**Sisi**  
Snail

